

Fleet and Asset
Management Solutions

Teletrac Navman Overview



Manage your fleet vehicles and assets more efficiently

With a simple and intuitive interface, you'll have the intelligence to help you easily locate vehicles and assets, monitor driver behaviour, and improve job dispatch – whether you want to track a single asset or an entire fleet. The solution is suitable for most industries with a fleet or asset and provides a range of features, reports and alerts that can be tailored to fit your specific requirements.

With the reach of the Telstra Mobile network, you'll be able to monitor assets from more places. Where Telstra Mobile network coverage is not available, our optional Iridium satellite network may be available to provide near real-time vehicle location, mapping, and reporting.

Run your fleet more efficiently

Improve route planning and dispatch to the nearest vehicle to help save time and increase the number of jobs completed each day. Reduce wear and tear by monitoring and curbing over speeding, excessive mileage, and unnecessary idling. View activities such as daily route performance, time spent at customer sites, and stop durations to help improve operations.

Improve the safety of staff in the field

Using the add-on Satellite Communications Unit allows you visibility and communication with your employees, vehicles and equipment, whether they are in Telstra network coverage or not. Keeping track of your workers and assets – whether in the city or remote areas – is an important necessity in managing the safety of your employees and your duty of care responsibility. You can also keep track of your vehicle and asset registration and maintenance, helping you keep your fleet running optimally and reducing the risk to employees.

Improve navigation times

Provide turn-by-turn driving instructions to your drivers to reduce delays and dispatch the closest vehicle to your customer's site to help provide efficient service delivery. You can also provide information on estimated arrival times for extra reassurance for your customers.

Have more control

View vehicle activities with address, date, and time. You'll be able to isolate business from private travel costs using fringe benefit reporting, reduce reliance on manual timesheets, resolve job and timesheet discrepancies quickly and monitor individual performance on a daily, weekly or monthly basis, as well as driver safety. What's more, you'll have proof of delivery and other information to help settle customer queries or improve billing accuracy.

Lower costs

Receive alerts about driver behaviour and maintenance. This helps you reduce wear and tear on your vehicles and assets so you can proactively schedule servicing to fix potential problems before they become expensive repairs. Plus, it can assist you in managing excessive driver behaviour such as idling and overspeeding, to help reduce fuel costs.



How it works

GPS/Satellite Tracking

Teletrac Navman hardware installed in each vehicle communicates with the GPS/Satellite to provide the position of each vehicle in your fleet.

Vehicle communication

Information is transmitted between each vehicle and the Teletrac Navman Application via the Telstra Mobile Network

Teletrac Navman Director or TN 360 Application

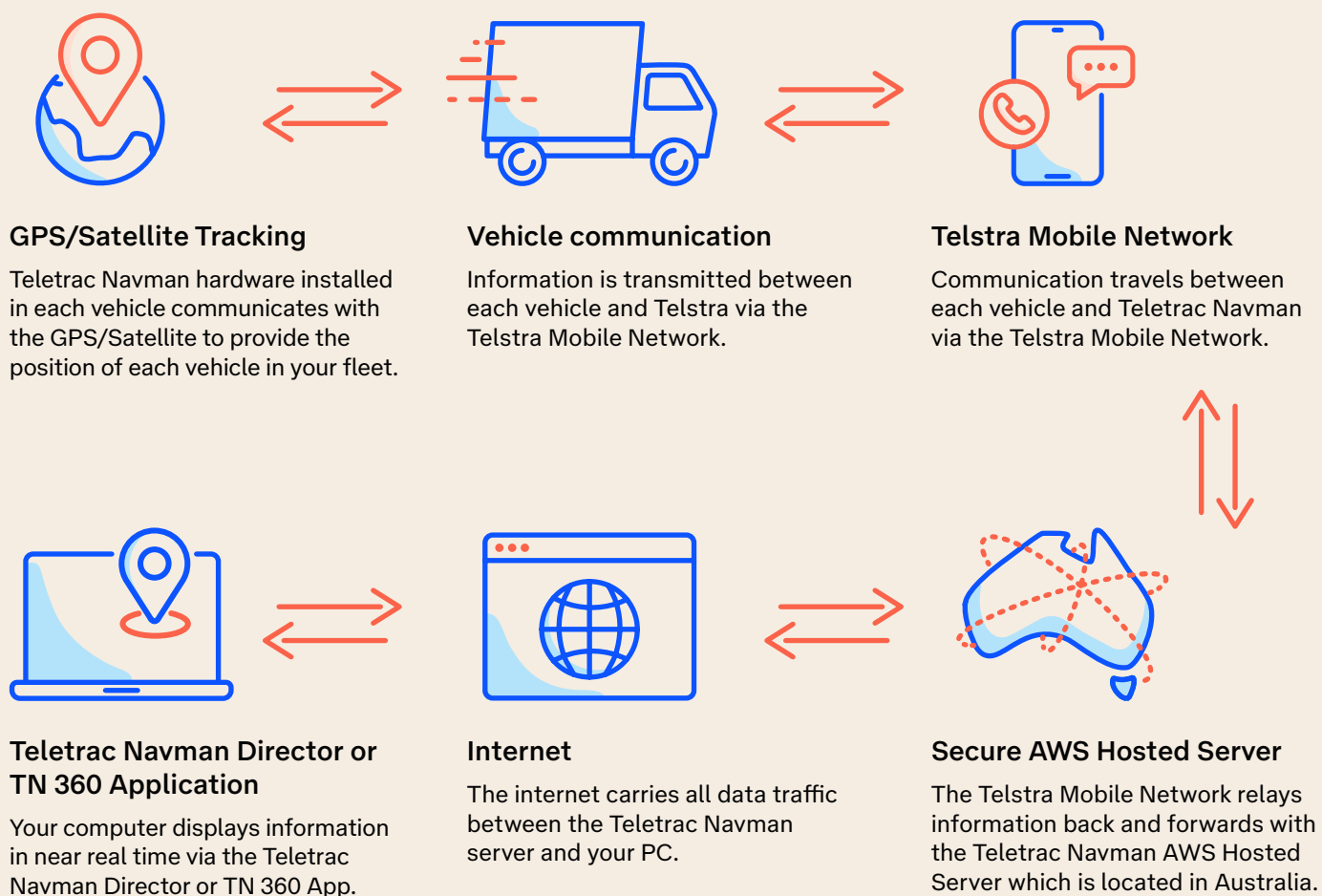
Your computer displays information in near real time via the Teletrac Navman Director or TN 360 Application.

Internetconnection

The internet carries all data traffic between the Teletrac Navman server and your PC.

Secure AWS Hosted Server

The Telstra Mobile Network relays information back and forwards with the Teletrac Navman AWS Hosted Server which is located in Australia.



Key Teletrac Navman Solution Features

Feature-rich applications

- Regular application updates with new features added.
- Mobile application for smartphones and tablets.
- Cloud-based application accessed via web browser.
- With high-definition data, view second by second vehicle data on an interactive map and speed graph.

Detailed reporting suite

- Fringe Benefits Tax reporting.
- Fuel and sustainability reporting.
- Trip and site reports.
- Driver and fleet reports.
- Scheduled reporting.
- Improve billing accuracy with detailed reporting to compare with timesheets.

Maintenance module

- Scheduled alerts and reporting on maintenance for fleet and assets.
- Fleet, servicing, and registration information storage information options.

Alert scheduling & calendaring

- Fully featured calendar for alerts scheduling.
- Business/private use, after-hours, stolen vehicle alerts, speed alerts.

Easy integration

- Via API for extended Telematics solutions and the automation of internal processes.

Uncover detailed insights

- Real-time notifications and instant messaging to drivers in the field
- Over 75 pre-built reports providing the most requested information
- Providing data insight to discover trends via natural search, anomaly detection, and dynamic dashboards
- Visual Dashboards displaying key business and operational metrics to provide powerful insights.
- Visual presentation of data presented as insights and analytics, with drilldown capability.

Backed by Telstra

- Teletrac Navman devices are Telstra network certified.

The Teletrac Navman solution uses Australia's largest and most reliable network, the Telstra Mobile Network.



Fleet and asset management solutions

Hardware



RE400

Introducing the RE400 Asset Tracking device. From yellow iron to heavy-duty machinery, the RE400 device within TN360 offers the benefit of an AI-powered fleet management solution with the near-real-time data captured from your assets. Derive metrics key to your business directly from your equipment - the RE400 is able to collect key data from sources such as GPS, GPIO, CAN bus, engine data, and more.



QUBE 3640

QUBE 3640 is a GPS-enabled tracking device that collects and sends information directly from the vehicle to you via a fleet management solution. Operating standalone or paired with an M-Nav for integrated driver messaging and navigation, you can create a powerful fleet and equipment management system that provides you with data and metrics to drive informed decisions.



VT102

The VT102 is the latest addition to the Navman Vehicle Tracking device suite for use with either the Director Professional or TN360 platform. Specially developed for use with the TN360 platform, the VT102 collects key metrics such as trip distance, vehicle engine data, and safety data and sends it to TN360, where you can easily view current status, alerts and ask detailed questions through Insights or run customised reporting.



AT301

The AT301 is a battery-powered device for smart tracking of powered or unpowered assets. The AT301 supports both Dual 4G LTE--M1 and NB-IoT network communications, has a battery life of around 10 years and provides alerts when batteries are running low or at a critical level.



VT202

The VT202 delivers advanced telematics capabilities, enabling fleet operators to make real-time decisions that streamline operations, improve safety and meet sustainability goals. The device works in both light and heavy-duty vehicles for fleets large and small. The VT202 is also TCA Level 2 Type-Approved for use in regulatory applications in Australia for improved access to the road network or increased payload.



SI201

The SI201 is a tracking device designed for light vehicles, providing business owners and managers essential information on location, usage and driving behaviour to help reduce operating costs and enable them to address identified concerns before an incident or collision may occur.



MT201

The MT201 is an IP67 ruggedised in-cabin device built to withstand Australia's harsh environment. It provides the driver with a means to complete their tasks with ease digitally, and eliminates paper-based process like jobs, route management, forms & checklists, documents, messages, and more. It also provides intelligent safety and compliance assistance to professional drivers in near real-time.



Accessories



MT501 Teletrac Navman Terminal

The MT501 accessory provides a fully integrated vehicle tracking, messaging, and satellite navigation solution in one package. The MT501 sits on your vehicle's dashboard or windscreen and interfaces with certain Teletrac Navman QUBE 3640 or RE400 and Teletrac Navman software. This gives you the ability to send and receive messages and route coordinates. With the forms functionality, you can define what type of content and which fields need to be completed before the message is sent to either your driver or dispatcher, including job numbers, customer names, parts required and more.



NavCAN Engine Management System

An engine management system captures and collates second-by-second vehicle data from a standard heavy vehicle CANbus. Key features include reports on braking, speed, revs per minute, engine hours, distance on the odometer, oil pressure and water temperature.



Satellite Communications Unit

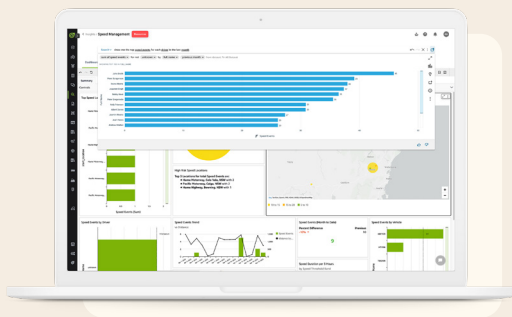
The Satellite Communications Unit allows you visibility and communication with your employees, vehicles and equipment, whether they are within a Telstra Mobile network coverage area or not. To help manage the cost of satellite communications, you have the option to define which events are high priority and should be communicated via satellite, while low-priority event data is stored on the Teletrac Navman QUBE 3640 and uploaded when the vehicle is next in Telstra 4G network coverage.



ST101 Solar Asset Tracker

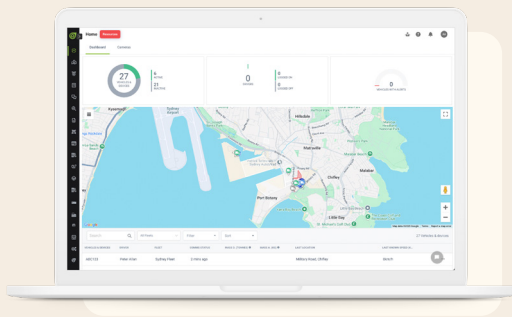
The ST101 Solar Asset Tracker is a purpose-designed and cost-effective solution for tracking small assets and trailers. It uses the latest in efficient, low-power IoT communications to provide years of reliable, battery-powered location tracking for essentially any kind of asset. The Solar Asset Tracker is especially suited to set-and-forget tracking of trailers and portable equipment due to its rugged, waterproof design and solar charging long-life battery.

Software



Director

Director software is at the heart of the Teletrac Navman Solution. This powerful control platform gives you near real-time visibility into your fleet or assets via your desktop, laptop or mobile device when in coverage areas. The innovative Dynamic Dashboard™ feature even allows you to measure and review all aspects of vehicle or asset activity in a graphical format. Our software has an intuitive interface and uses Google Maps™ to provide comprehensive map features and detailed information for your office staff. This includes Google Satellite™ and Google Street View™ to allow office staff to see photographs of the actual location and provide instructions to the driver when required.



TN360 AI-Powered Fleet Management Solution

Teletrac Navman's TN360 is an AI-enabled telematics platform that is designed to deliver near real-time data, visibility and impact for any fleet operation. With its ability to turn data into decisions, TN360 helps you manage all aspects of your operation and helps you answer questions while detecting patterns for the biggest points of impact.

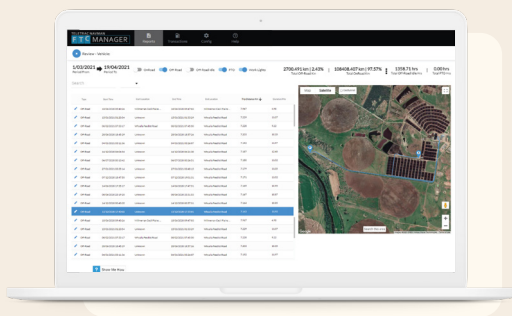


MT201 In-Vehicle Driver Compliance & Productivity Pack

The MT201 In-Vehicle Driver Compliance & Productivity Pack is a suite of applications to assist your transport business with compliance, productivity, and efficiencies. The MT201 In-Vehicle Driver Compliance & Productivity Pack includes in-cabin applications and backend compliance software. In the cabin, drivers can access Sentinel, a comprehensive electronic work diary application to manage driver hours and fatigue.

Mass Manager is an application for managing vehicle mass on roads and pre-trip checklists, which are essential to help identify vehicle faults before trips are undertaken. In the office, the dispatcher or operator can manage drivers and jobs using the suite of visual dashboards and reporting tools. They can locate and allocate drivers to jobs based on their hours of work and receive alerts.

When vehicle faults are detected, operators can be alerted so they can be addressed quickly, and they can also receive photos of the areas of concern.



FTC Manager – Fuel Tax Credit Management

Teletrac Navman's FTC Manager is the most revolutionary fuel tax credit solution that uses near real-time high-definition second-by-second GPS location data from telematics installed in vehicles and equipment to calculate off-road travel and auxiliary fuel use to maximise your fuel tax rebates. Boasting ATO Product and Class Rulings, you can rest easy knowing your FTC claims are compliant and maximum refunds are ensured.

The IQ Camera: a Smart Vehicle Camera Solution

With the power of vision, the smart dashcam is a first for vehicle technology providing you with the capabilities of Artificial Intelligence, telematics data, and advanced onboard sensors to detect, reason and determine causality of events that occur while your drivers are on the road.

Designed specifically for businesses that operate fleets of light vehicles right through to trucks, Teletrac Navman's smart dashcam uses built-in sensors with analytics and footage that matters most directly from the vehicle without leaving the office.

Run your fleet more efficiently

- Uses high-definition forward and driver-facing lenses to provide high-definition 1080p footage
- High-quality footage, no matter the time of day, even in the dark with ambient light sensors.
- Built-in sensors that help identify inertial, movement, driver, and external events, from g-force and hard braking, to following distance and distracted driving. Driving risk mitigation by analysing every minute of

drive time, not just when a risky event has occurred.

- Transparency and balanced dialogue to engage with drivers in a positive and constructive way to view performance and improvements.
- Personalised approach to training and coaching in areas where drivers need help.
- Built-in scorecard system that provides visibility into an individual driver's score relative to the fleet average, key events, and information.
- Real-time coaching in the cab so that drivers can make immediate changes to their entrenched driving habits. Mobile application for both fleet managers and drivers to monitor their own performance.
- Receive notifications when a driver has a significant change in fleet and driver metrics, both positive and negative, so you can reward great driving or coach in a timely and effective manner.



Solution options

Fleet & Asset management

Track your vehicles or assets via GPS, monitor speed, braking, fuel consumption and route efficiency.

Fuel Tax Credit Manager

Automate the process of collecting data which can help you with your fuel tax credits. Teletrac Navman will automatically monitor when you're using a road and when you're not.

Heavy Vehicle Compliance Assistant (HVCA)

Helps you to collate data which assists with risk and compliance management.

Design & Implementation Service

Utilising the Teletrac Navman national partner network, we can help you design and then install a suitable Teletrac Navman solution.



Industry benefits

Teletrac Navman GPS Fleet and Asset Management Solutions can help reduce the guess work from managing your vehicles and assets.

For the construction and resources industries, the ruggedised solutions are built to operate in harsh environments. For the service industry, there are specialist solutions such as electronic logbooks for fuel tax benefit reporting. The Teletrac Navman solutions may (if available) be integrated into your existing business applications via the provision of application programming interfaces (API's) to help meet industry-specific requirements. Speak to your Telstra representative for further information and option availability.

Service

- Stay up to date with the latest developments in the field with job information.
- Generate reporting to analyse deliveries, to help you meet your customers' requirements and ensure customer satisfaction is maintained.
- Optimise workflows by creating and assigning jobs to field staff, vehicles, and drivers in the area using job management to improve response times.
- Use preloaded forms to automate and standardise responses to jobs to help reduce human error. Using preloaded forms, drivers can respond 'job completed' on their MT501 Teletrac Navman Terminal instead of having to call into dispatch to tell them.
- Create configurable business rules to automate operational processes, enabling you to focus on the important things.
- Reduce administration and manual log books with fringe benefits tax reporting for increased efficiency and accuracy.

Construction

- Create alerts and geofences to get notifications of unauthorised use of equipment on the job site or in remote geographical locations.
- Track equipment activity, fuel usage, and many other operational variables using the extensive range of pre-configured reports to assist in the analysis of performance and cost savings to help you improve the bottom line of your business.
- Use insights and data from historical reports to estimate costs more accurately for future jobs.
- Stay up to date with the latest developments on-site via near real-time vehicle or asset status alerts and two-way messaging.
- Proactively manage the servicing of vehicles or assets, so you can plan, schedule, and record vehicle maintenance costs and history.



Industry benefits

Local Government

- Collecting the data from vehicles, equipment and machinery to make informed decisions about utilisation of assets, help to reduce theft and manage unauthorised use.
- Manage staff driving behaviour using driver score-carding and assist with customer service issues by having the data to understand the events leading to or after an incident.
- Understand vehicle and asset utilisation.
- Manage carpool booking, fuel costs and vehicle maintenance.

Transport

- Track your vehicles and mobile staff easily and communicate with drivers using two-way messaging via in-vehicle displays that provide turn-by-turn directions.
- Manage driver safety with alerts triggered by real-time events sent directly to your screen, email, or phone.
- Monitor driver behaviour. With Teletrac Navman, you can replay historical vehicle activity, view the path taken by the vehicle, assess your driver's speed and braking behaviour and monitor for incorrect vehicle use.
- Track proof of delivery by creating geofences around customer locations to record entry and exit activity, assisting you to meet your customer service expectations and agreements and reduce loading cycle times.



Mining

- With an In Vehicle Monitoring System (IVMS), use tracking units to understand the entry and exit of vehicles or large assets. Pinpoint the location of expensive, smaller assets such as generators using the RE400. Solutions can be tailored to specific requirements with a range of accessories available (subject to availability).
- Monitor workplace conditions and improve the safety of drivers when they are in Telstra mobile network coverage areas. For mines in remote locations, there is the option of using the Iridium Satellite network (subject to availability).
- Accident alerts can be triggered, which send automated notifications to the Teletrac Navman software on impact so that you are able to alert emergency services should an accident happen. This function does not replace emergency services; please contact your emergency contacts available in your State or Territory for all emergencies.
- Understand the behaviour of drivers and manage issues with speeding, harsh braking, and cornering to help ensure their safety.
- Know when your vehicles and assets are due for service and registration, set up alerts for maintenance scheduling so you can keep track and assist with keeping your fleet safe.

About Telstra

We provide network services and solutions to more than 200 of the world's top 500 companies. They rely on us to do business across 240 countries and territories and to enable greater productivity, efficiency and growth. Our solutions offer skilled people and a rich portfolio of services delivered on our world-class Telstra Mobile Network. To ensure reliable performance, they're monitored and maintained from our dedicated centres using advanced management and operational systems. And they're backed by Telstra Enterprise-grade Customer Service® and one of Australia's largest and most qualified field and technical workforce.

Things you need to know

The standard Teletrac Navman solution is dependent on network connectivity, and therefore is not intended to act as, or replace existing, fail-safe technologies.

Telstra's solutions use Australia's largest and most reliable network, the Telstra Mobile Network. For areas outside of mobile reception, you may (subject to availability) purchase satellite connectivity.

All prices are correct at time of printing. If you have an agreement with a minimum term and you cancel your agreement early, you must pay us an early termination charge as outlined in your agreement with us. You will need to separately purchase a month-by-month mobile data plan with Telstra and for certain mobile communication functions to work on some devices.

Telstra Mobile Network coverage depends on your location, device and whether it has an external antenna attached. Visit telstra.com/coverage to check coverage locations.

This brochure is for information purposes only and products and services mentioned may not be suitable to your circumstances. Please contact your Telstra representative to discuss options available and for further information.

Products and services mentioned in this brochure are subject to our Critical Information summary and Telstra's Our Customer Terms Telstra Mobile Network-Part G – Data Services of Our Customer Terms. Please contact your Telstra representative for further information.

Contact your Telstra Account Executive

1300 8357 878

telstra.com.au