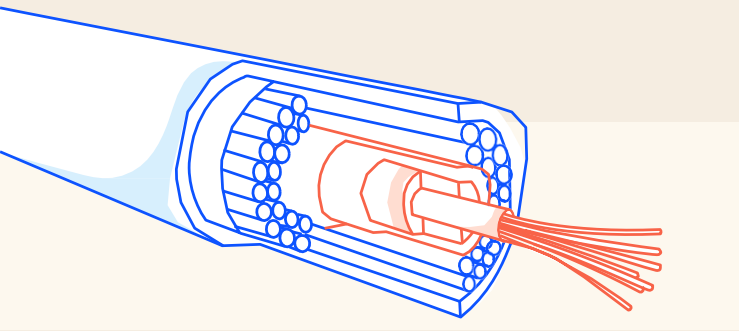


Telstra Dark Fibre

Discover your potential on our network



What is Telstra Dark Fibre?

Telstra Dark Fibre is an unlit fibre optic pair running between two points, an A site and a B site. This fibre becomes active and transmits data when connected to your transmission equipment, giving you control over your network. With low latency and the ability to support high speeds, Dark Fibre grants you the power to meet your business' changing needs. Discover unlimited potential with Australia's most extensive and growing fibre footprint to create your own digital infrastructure.

With Telstra Dark Fibre, the customer is responsible for providing their own transmission equipment.

Lit Fibre service

Service provider network
(Including other transmission equipment)

Service provider equipment Site A

Service provider equipment Site B



Fibre terminating unit Site A

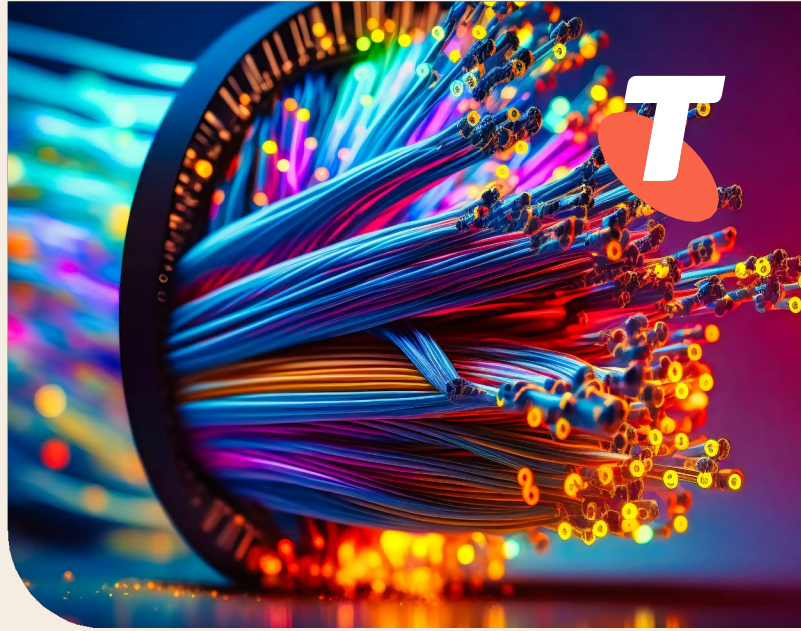
Fibre terminating unit Site B

Dark Fibre service

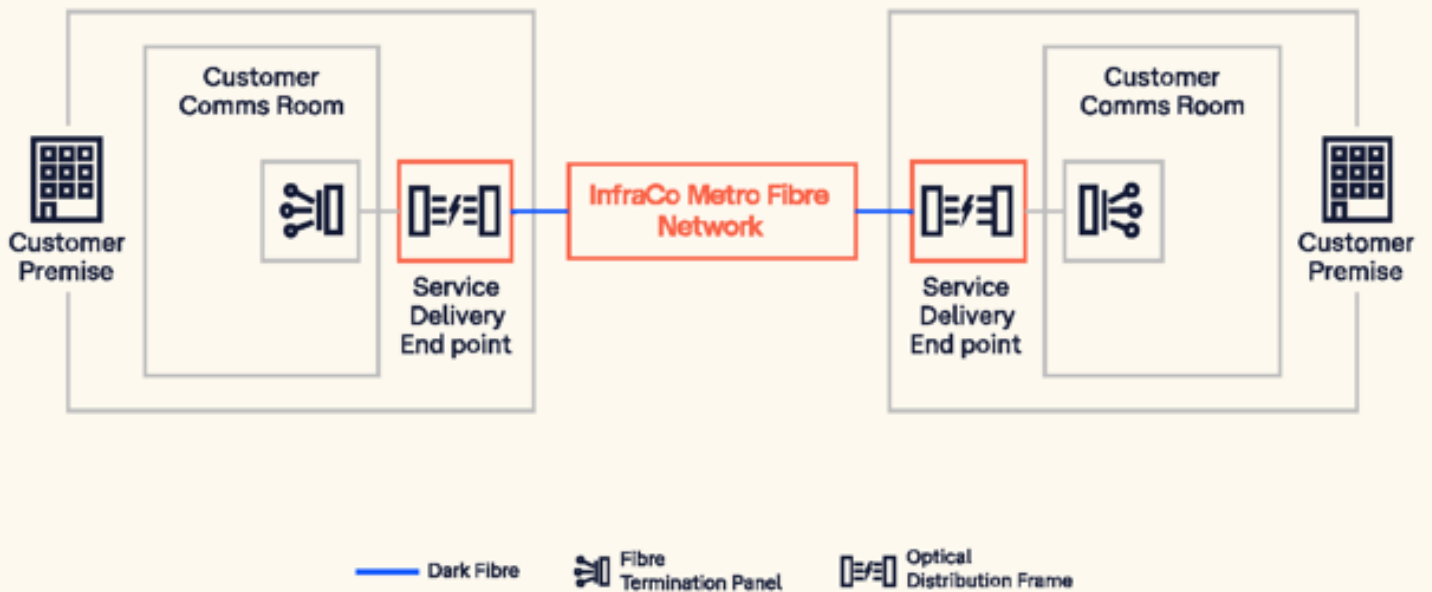
Dedicated fibre

Premise

Dark Fibre premise runs between two customer premises, terminating into the customer communications rooms. The customer is then able to connect equipment and build a dedicated network between two of their sites.



Architecture



Data Centre



We provide world-class infrastructure building blocks, from data centres at the core, out to network facilities at the edge, to enable you to build digital infrastructure solutions to power your business.

Connecting data centres is easy with Telstra Dark Fibre. Our fibre terminates in the data centre's meet-me room, allowing customers to easily connect their equipment and arrange cross-connects.

Architecture

