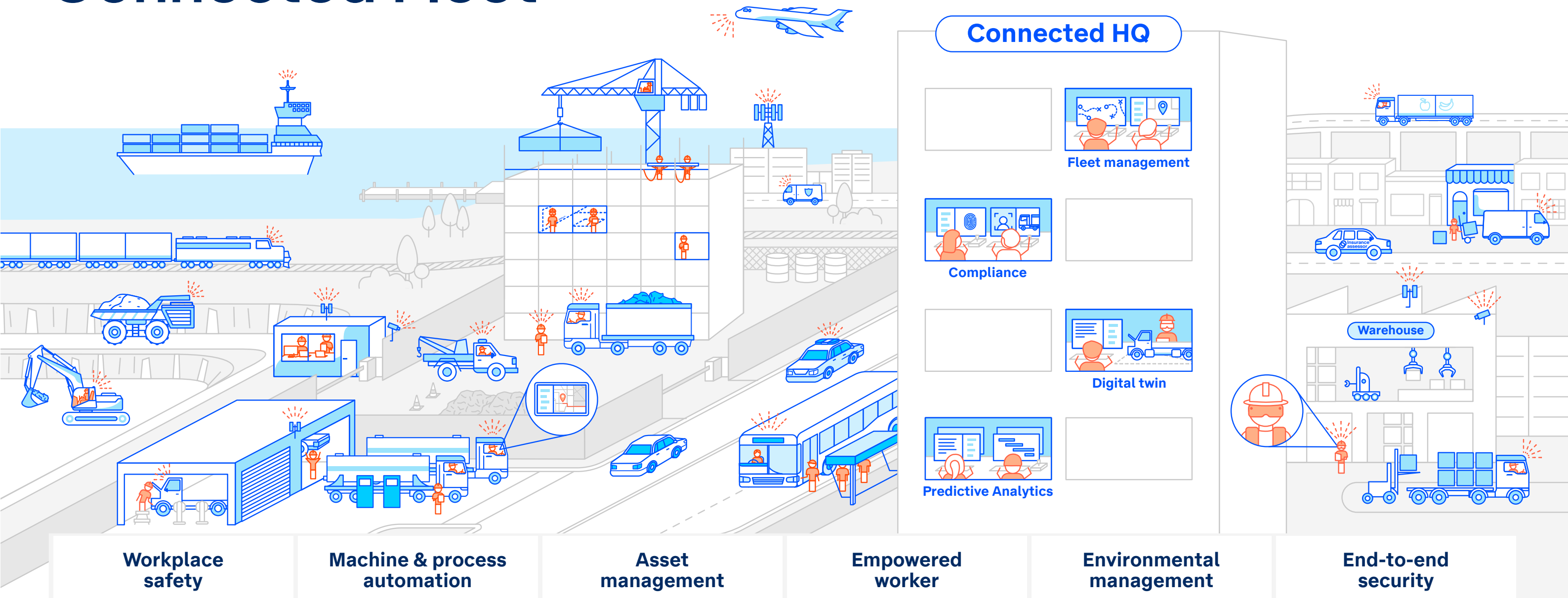
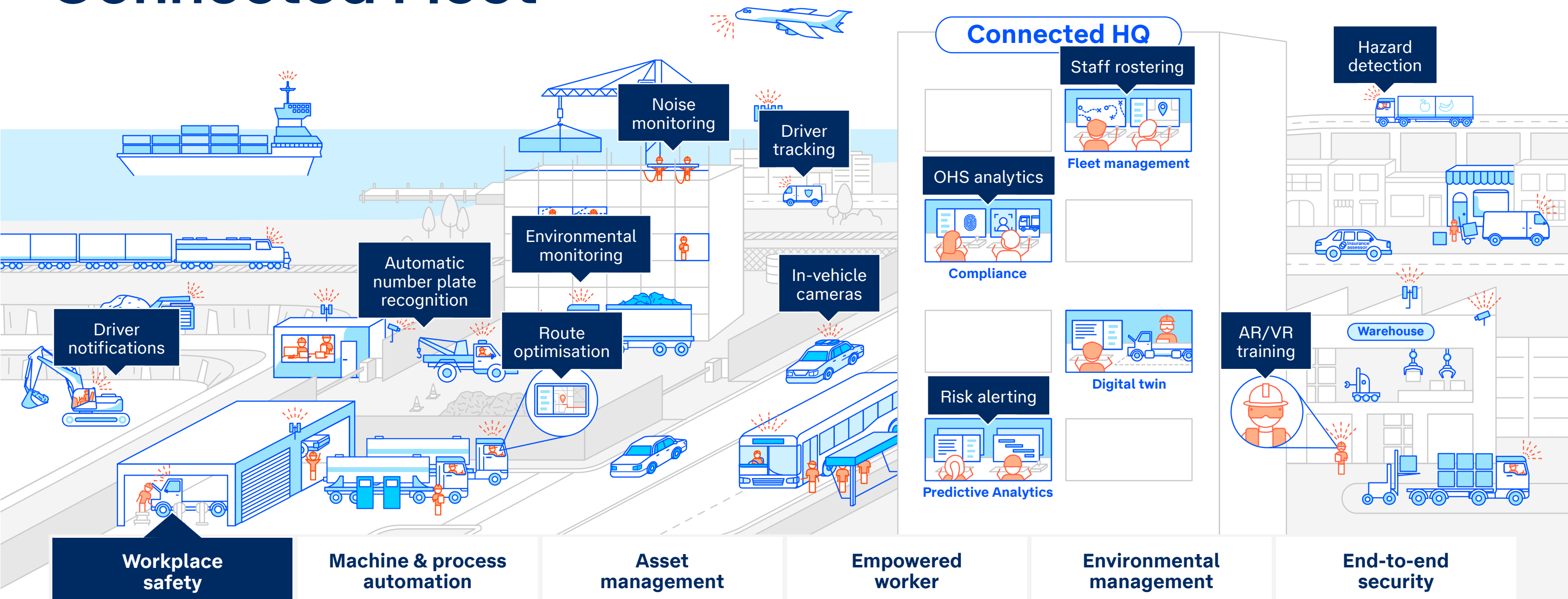


Connected Fleet



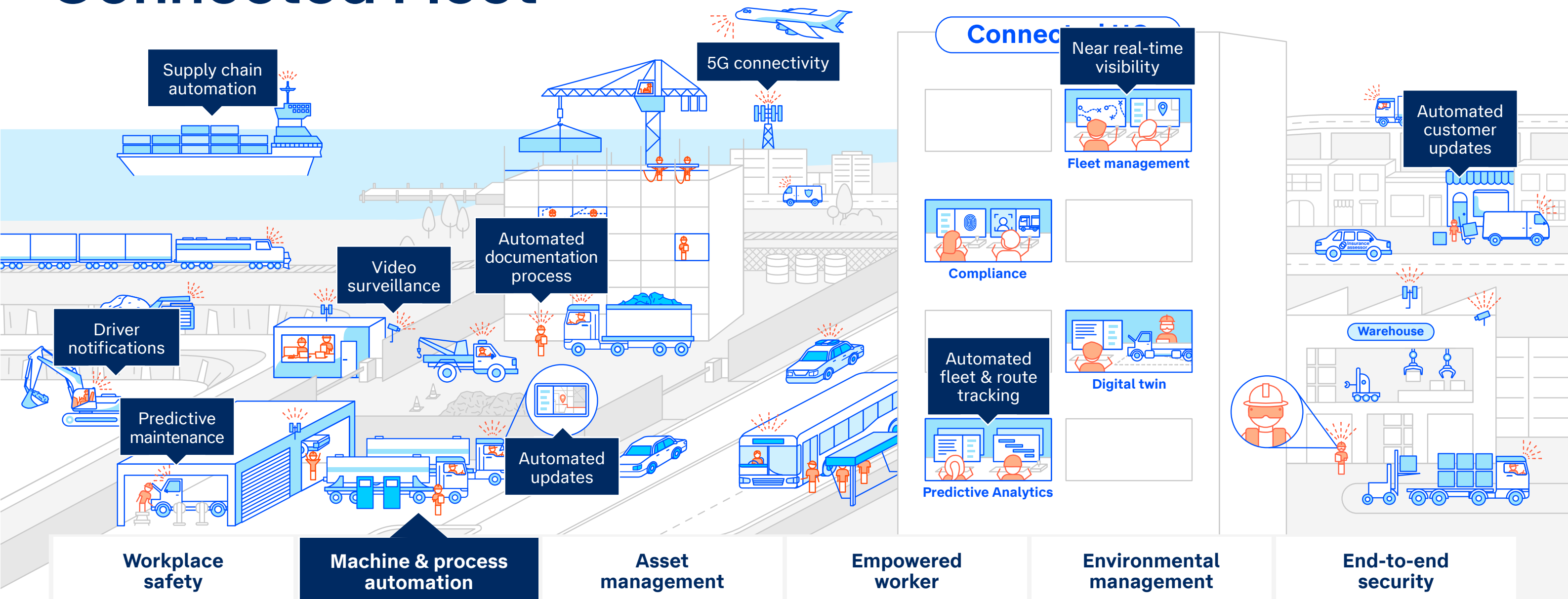
^ Click on the tabs above to explore ^

Connected Fleet



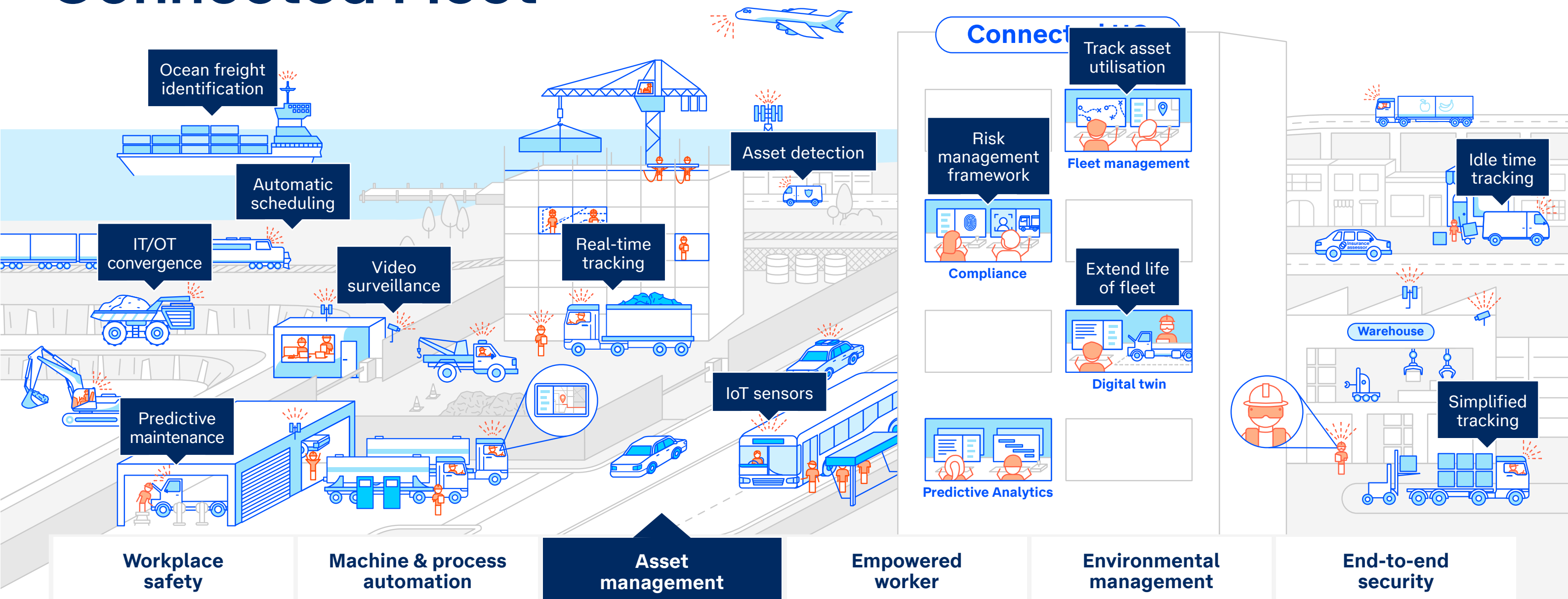
Harness the power of analytics with increased data visibility that can be used to improve staff safety and wellbeing, and ensure compliance to safety regulations. Data-driven insights from in-vehicle cameras and telematics can identify potential hazards and implement preventative measures. Ensure drivers have achievable ETAs thanks to automated scheduling that factors in rest times and has dynamic route options.

Connected Fleet



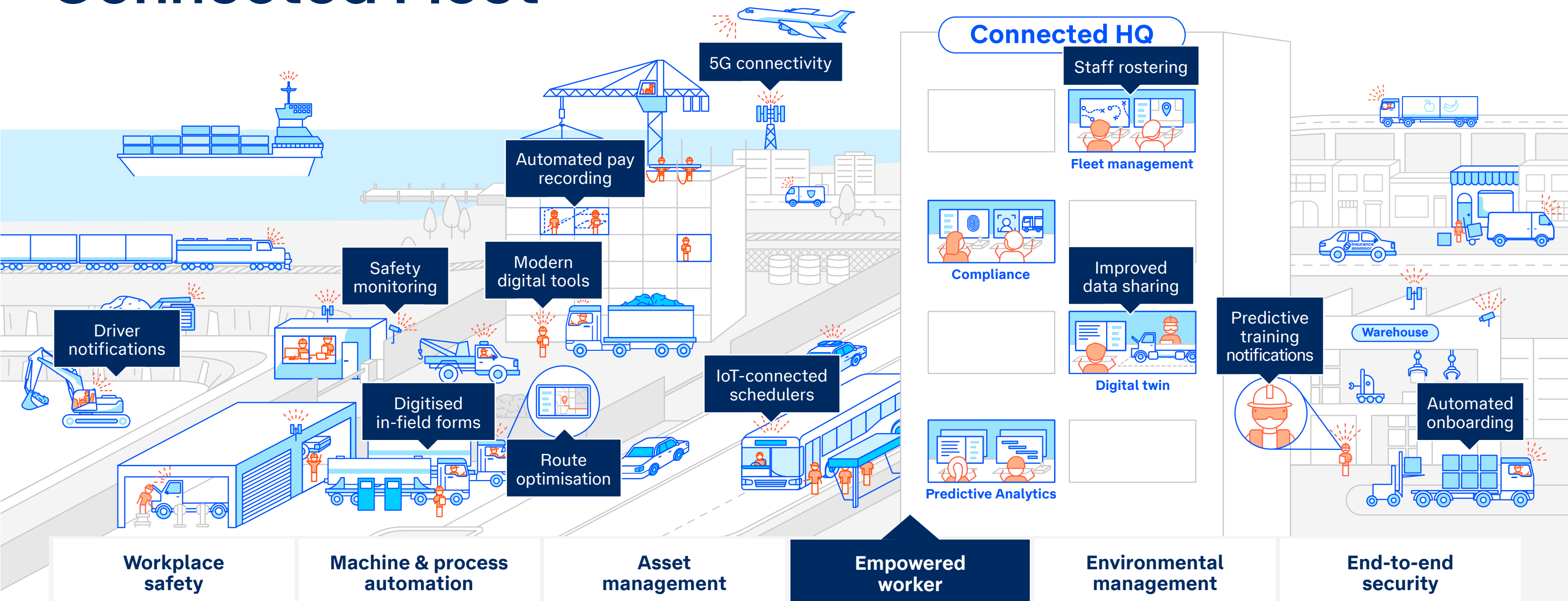
Being fully connected via our powerful 5G network unlocks the potential for automation across your operations. Enjoy an automated fleet management system that streamlines administrative processes and workflows to make efficiencies and reduce errors and the burden of admin tasks.

Connected Fleet



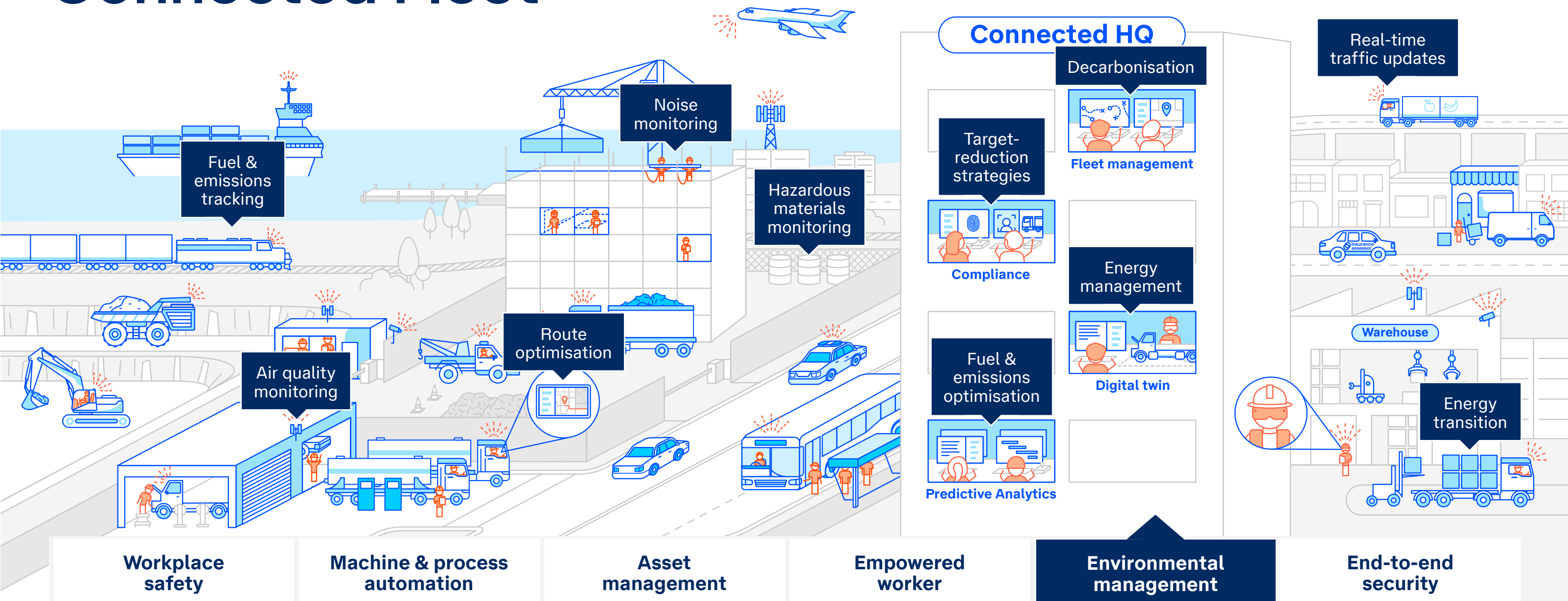
Transform your fleet into a strategic technology asset that can benefit your entire value chain. Optimise asset utilisation by analysing metrics like idle time and route efficiency, to minimise costs and downtime, and extend the life of your fleet. Plus, we'll help you integrate the fleet management platform with your existing IT systems.

Connected Fleet



Improve your staffs' day-to-day experience at work by streamlining processes and onboarding, and digitising in-field forms and timesheets. Proactively address training needs and ensure driver credentials do not expire by implementing automated predictive notifications. With IoT-connected operations, drivers, schedulers and customers will enjoy better communication too.

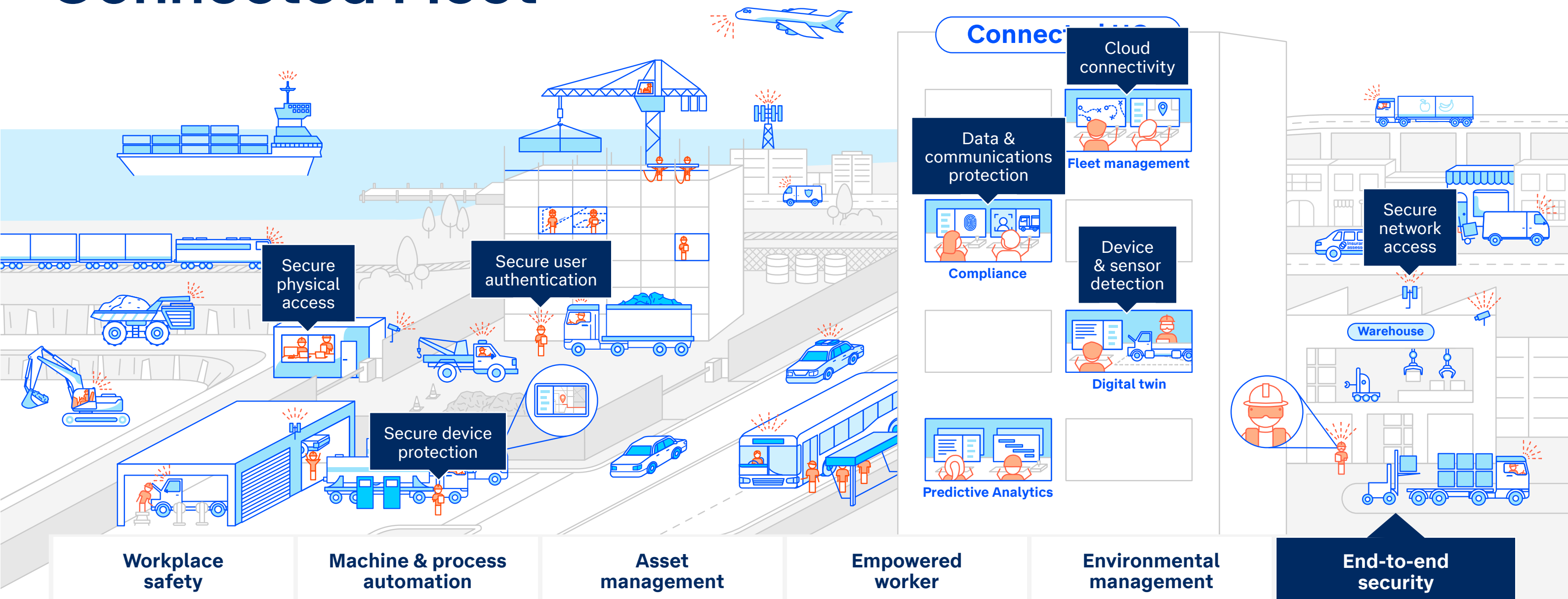
Connected Fleet



Implement more sustainable practices by integrating our digital tools and accessing actionable data throughout your entire value chain.

Streamline reporting on fuel consumption and sustainability to ensure fleet emissions are tracked. This data can be used to develop achievable and effective target-reduction strategies. Our experts can also help with energy transition and decarbonisation.

Connected Fleet



Put your trust in Telstra's robust security measures throughout our solutions. With security embedded from the core to the cloud and right to the very edge of your network, your devices, sensors, cloud services, company/customer data and business reputation are protected against cyberthreats. Our Security Operations Centres will be monitoring 24/7 to help keep you safe as you transition to a digitally-connected fleet.