

EagleTrack Telematics Solution

Keep your business moving smoothly
by staying connected with your entire fleet.





Managing your fleet is easy with EagleTrack. Designed by MTDData, our telematics and fleet management solution enhances vehicle utility while saving time and effort for you and your drivers. Access at any time to view location and status on a map, along with more safety and performance features. Plus, with our driver tools, we can keep you connected with drivers while they're on the road.

MTDData is a Telstra owned Australian telematics company, specialising solutions for the transport and logistics industry. Since 2003, MTDData has helped customers improve efficiency, reduce costs and maintain safety compliance. We are a true technology partner working closely with our customers to build the perfect solution their unique businesses.



Australian designed software



Customisable solutions



Professional service & support

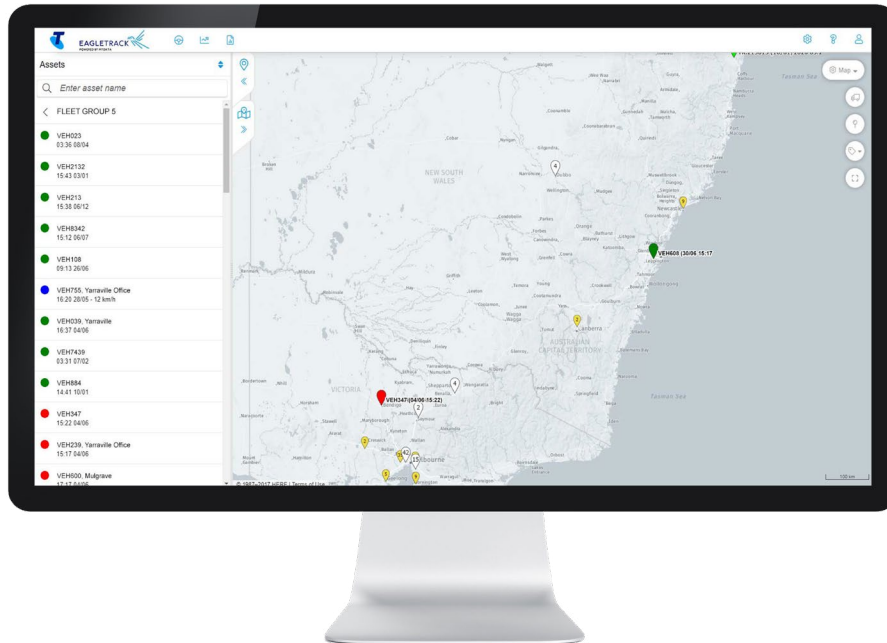


Secure & reliable solutions



Telstra network

See what's happening on the road in one place



Live & Historic Tracking

Use near real-time data from your fleet to make informed decisions 24/7 via our web-based platform, EagleTrack. Track location, direction, speed, route, mileage, engine idling and much more to generate real costs savings benefits. View the journey history of multiple vehicles with the history replay tool which overlays the vehicle's travel route.



Asset Tracking

EagleTrack not only tracks your vehicles but also important and valuable assets to your business. There is a range of tracking devices including solar powered and bluetooth trackers to suit a variety of assets.



Waypoints & Proximity Searches

Save customer sites or office locations as waypoints, providing the ability to report on entry and exit, speed at site and holding times. Alerts can be raised to notify of waypoint activity in near real-time to allow your business to respond early. Locate vehicles with a proximity search to find out if a vehicle has been within a location in a set period.



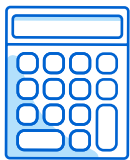
Dashboards & Reports

EagleTrack digests and presents fleet data into tables and graphs. Dynamic dashboards give you the visibility to see fleet trends and identify specific areas for improvement. Export reports to keep a record of all the information on file.



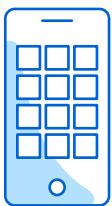
Pre-Trip Checklist

The integrated tracking unit and driver app prompts drivers to login and complete a fully configurable pre-trip checklist at the commencement of a shift or trip. This information is time and date stamped and stored on the EagleTrack platform where Management can be notified of failed requirements.



Fringe Benefits Tax

Our module allows you to easily report on Fringe Benefits Tax (FBT) exemptions. This process completed on a mobile app by the driver at trip commencement, saving time and ensuring fast FBT reporting.



Driver App

The EagleTrack Driver app allows you to connect with drivers while they're on the road. Drivers can download the app onto their mobile phones, enabling pre-trip checklists, FBT declarations and more features right at their fingertips. The app integrates with the tracking device and EagleTrack software, centralising all vehicle and driver inputs in one system.



Alerts & Notifications

Alerts can be customised for almost any event in real time. This gives you the ability to proactively manage your fleet and act immediately when an event occurs before it escalates.

Vehicle Tracking

EagleTrack delivers invaluable information to businesses so they can gain control, manage and review their fleet and mobile workers. We offer two vehicle tracking units, a simple to use plug-in solution or a hardwired tracking unit. Both units are designed to be tucked away and out of sight of the driver and provide 24/7 tracking. Our units are of premium construction and are built to last.

When it comes to choosing which hardware solution is right for your fleet, it is important to consider if you need a permanent and discreet solution such as a hardwired device or a portable and easily removable plug-in unit. We also allow you to mix and match hardware types so you can pick the best device that suits each vehicle and its use.



Plug & Play Vehicle Tracking Unit 4G

Small and portable – Our EagleTrack Plug & Play Vehicle Tracking Unit 4G is ideal for businesses that need a low cost solution that can be self installed in almost all vehicles

- Plug and play
- Zero maintenance
- Built-in 30mAh battery



Hardwired Vehicle Tracking Unit 4G

Robust and secure – The EagleTrack Hardwired Vehicle Tracking Unit 4G provides you with the security of a discreet and hidden tracking solution that can be mounted out of sight or in a tamper-proof location

- Wired installation
- Large 1000mAh battery
- Wiring loom included

Asset Tracking

EagleTrack can help your business track not only your vehicles but also your valuable assets. We offer a range of hardware which can suit a variety of powered and non-powered assets.



Powered Asset Tracking Unit 4G

The Powered Asset Tracking Unit 4G is ideal for powered assets where reporting frequency matters. The device can withstand dust and is water resistant.

The tracking unit is designed for reliable, long-term deployments and is ideal for assets that are tethered but may sit disconnected for periods of time. Equipped with a rechargeable battery pack, precise GPS technology enables a broad array of use cases for asset management solutions.

- Rugged ABS enclosure
- 2 minute reporting frequency when asset is powered
- Sealed wiring loom included



Solar Tracking Unit 4G

Our Solar Tracking Unit 4G is simple to install and includes a large 10,000mAh rechargeable battery. Ideal for non-powered outdoor assets.

- Designed for extreme conditions
- 4 hourly reporting frequency
- Operates indefinitely when outdoors with access to sunlight



Cat-M1 Tracking Unit

The Cat-M1 Tracking Unit combines the power of the Telstra Bluetooth Finder Community along with strength of the Telstra 4G network.

- Up to 5 year battery life with zero maintenance
- 24 hour reporting frequency with additional periodic updates possible via the Telstra Bluetooth Finder Community



Cat-M1/Bluetooth Tracking Tag

- Up to 4 weeks per full charge on its rechargeable battery
- 20 minute reporting frequency when asset is moving with additional updates via Bluetooth Finding Community



Bluetooth Tracking Unit

- Up to 5 years battery life with zero maintenance
- Periodic reporting frequencies via the Bluetooth Finding Community

Product Features



	Plug & Play Vehicle Tracking Unit 4G	Hardwired Vehicle Tracking Unit 4G	Powered Asset Tracking Unit 4G	Solar Tracking Unit 4G	Cat-M1 Tracking Unit	Cat-M1 / Bluetooth Tracking Tag	Bluetooth Tracking Unit
Tracking solution	Vehicles	Vehicles	Assets	Assets	Assets	Assets	Assets
Vehicle and Asset insights captured via hardware							
Live tracking	✓	✓	✓	✓	✓	✓	✓
Historical replay	✓	✓	✓	✓	✓	✓	✓
Signposted Speed Reporting	✓	✓	✓	✓	✗	✗	✗
G-Force Events	✓	✓	✓	✓	✗	✗	✗
Ignition on/off time	✓	✓	✓	✓	✗	✗	✗
Idle Capture	✓	✓	✓	✓	✗	✗	✗
Stationary reporting	✓	✓	✓	✓	✗	✗	✗
Waypoints & Geofences	✓	✓	✓	✓	✓	✓	✓
Proximity search	✓	✓	✓	✓	✓	✓	✓
OBD ECM data	✓	✗	✗	✗	✗	✗	✗
GPS ODO reading	✓	✓	✓	✓	✗	✗	✗
Fleet/Vehicle performance dashboards	✓	✓	✓	✓	✓	✓	✓
Driver Behaviour dashboards	✓	✓	✗	✗	✗	✗	✗
Email exception alerting	✓	✓	✓	✓	✓	✓	✓
Driver insights entered and captured via Driver App							
Driver ID & Login	✓	✓	—	—	—	—	—
Pre-configured Pre-Trip checklist	✓	✓	—	—	—	—	—
Fringe Benefits Tax (FBT)	✓	✓	—	—	—	—	—
Fuel Tax Credits							
FBT module *	✓	✓	—	—	—	—	—

* FTC Module is additional cost and needs to be activated and billed directly by MTData

Hardware Technical Specifications



	Plug & Play Vehicle Tracking Unit 4G	Hardwired Vehicle Tracking Unit 4G	Powered Asset Tracking Unit 4G	Solar Tracking Unit 4G	Cat-M1 Tracking Unit	Cat-M1 / Bluetooth Tracking Tag	Bluetooth Tracking Unit
Tracking	Vehicles	Vehicles	Assets	Assets	Assets	Assets	Assets
Network Technology	4G	4G	4G	4G	4G and Bluetooth Community	4G and Bluetooth Community	Bluetooth Community
Dimensions	43 x 65 x 25mm	53 x 94 x 20mm	78 x 113 x 22mm	262 x 88 x 30mm	114 x 80 x 39mm	35 x 75 x 19mm	45 x 38 x 21mm
Weight	52g	80g	193g	584g	289g	112g	48g
Tracking Frequency	120 sec	120 sec	120 sec	60 sec, with 10 min bulk data upload (moving) 4 hrs (stationary)	1 day (Cat-M1) +Proximity to Bluetooth Finding Community	20 min (moving) 12 hrs (stationary) +Proximity to Bluetooth Finding Community	Last known approximate location in proximity to Bluetooth Finding Community
Battery	30mAh	1000mAh	1000mAh	9000mAh (Solar rechargeable)	12000mAh (Replaceable)	1000mAh (Rechargeable)	Non-Replaceable
Battery Life (ignition off)	Up to 5 hours	Up to 5 hours	Up to 5 hours	8 months (est.life ~5yrs)	Up to 5 years (on 1 track per day profile)	Up to 4 weeks per full charge (based on movement)	Up to 5 years
Vehicle System Voltage	12 VDC	12 VDC	12 VDC	N/A	N/A	N/A	N/A
Certifications	FCC, CE, IC, PTCRB	FCC, IC, PTCRB	FCC, IC, CE, PTCRB, RoHS	FCC, IC, CE, PTCRB, RCM, RoHS, Reach, SAEJ1455, ISO16750	RCM, CE, BT SIG	RCM, CE, BT, SIG	RCM, CE, BT SIG
IP Rating	N/A	IP44	IP67	IP67	IP67/IK10	IP67	IP68/IK08



A Telstra Company



 <http://www.eagletrack.com.au/>

 1300 477 872

 sales@eagletrack.com.au