

Turn asset tracking data into decisions

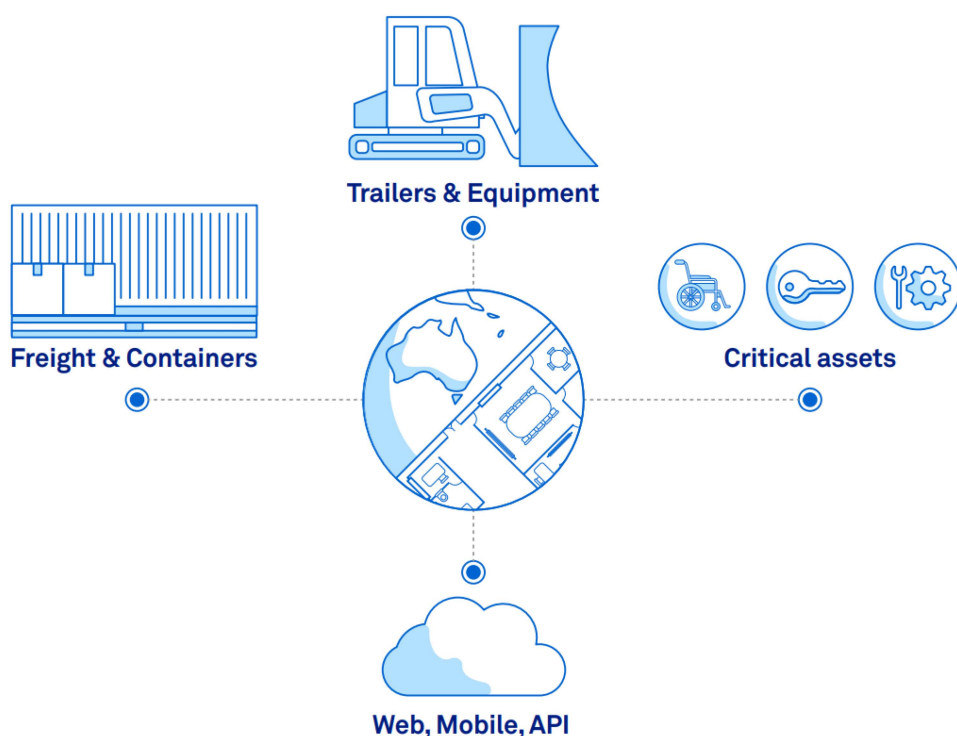
Telstra Track and Monitor® can help your business track moving assets on and off your site to reduce costs, and improve customer experience

Today, your customers demand a better service faster, and cheaper. To meet these demands, you need to be more efficient managing your moving assets.

The more visibility you have, the better you can manage your business and turn asset data into decisions.

We'll deliver the right asset tracking solution for your business.

Device
Track assets of different sizes and values with enterprise grade devices designed to suit your needs.
Network Technologies
Track assets using Cat-M1 (LTE-M) , Bluetooth® and your site's compatible wireless network#
Track and Monitor App Web Portal and API
A secure onshore cloud platform hosts tracking data in a web portal or mobile app.
Outdoor maps and indoor floor plans. Integrate with your own systems via API (fees may apply).



Asset trackers for your needs

Visibility at a glance, detail at a click.

- visibility of moving assets' last known approximate location details when in range of network technologies.
- asset location data is sent via cost efficient network technologies.
- create tags and geozones to quickly search for specific or multiple assets by asset type, job or location.
- track within your indoor spaces with increased accuracy and frequency#.

Make decisions based on data in a moment

- make decisions based on the last known approximate location of the asset at the click of a button.
- location data means that you can manage assets at scale and serve your customers better.

Telstra IoT network technologies

Telstra provides network technologies to reliably and securely support a range of IoT deployments:

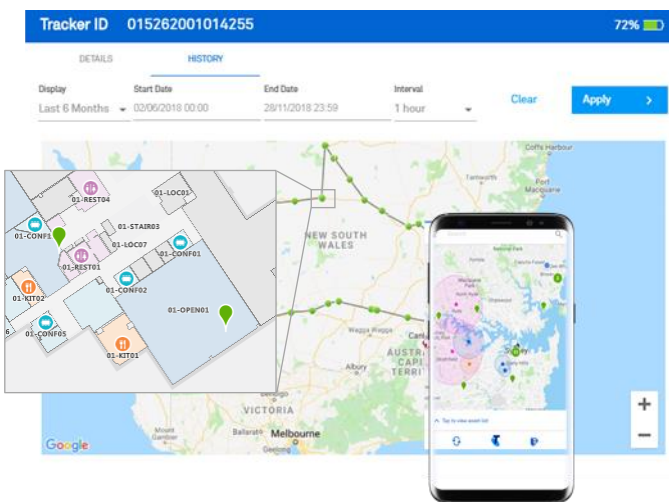
- **Cat-M1 (LTE-M)**
The Telstra IoT Network has around 3m sq km's of coverage for Cat-M1 devices. It's Australia's largest low power wide area (LPWA) footprint that supports IoT securely at scale and at low cost.
- **Wireless networks at your site#**
Enable your network to provide location observations at your site. Supported on Telstra Managed Wi-Fi, Telstra Air Enterprise or your own compatible network.
- **Telstra Bluetooth community**
Enable your workforce to take your Bluetooth network with them, using their mobile devices to locate nearby items. You can also receive observations from the broader community of users as well as 6000+ Telstra Air enabled payphones and public hotspots. Discover the reach of the Telstra Bluetooth community at www.telstra.com/BluetoothCommunity

Testimonial – SCT Logistics deployment of 1500 Solar Trackers

"SCT Logistics chose Telstra Track and Monitor for the unparalleled IOT network coverage across Australia to deploy Solar charged Cat-M1 trackers on our fleet. It will allow us to locate rail wagons and containers easily, forecast delivery times and analyse data in the moment to deliver efficiencies in our business."

Sean Atchinson- CIO, SCT Logistics

 Telstra.com/Track and Monitor
Click 'Get In Touch'



Telstra Track and Monitor Web Portal and Mobile App

Indoor tracking (new feature)

Enhance visibility of your Track and Monitor devices at your site using your existing wireless network# to:

- detect when assets arrive or leave
- track assets on your floor plan

Available now with Bluetooth enabled Cisco Meraki networks. Coming soon for Wi-Fi and other compatible vendor solutions.

A professional services partner you can trust

Our professional services teams and partners can help you get started quickly with a solution that is ready to scale.

Innovate with confidence knowing we:



have the expertise to take you through a design-led approach to help reduce costs, deliver a better customer experience and gather richer business insights.



offer a pilot program to help you integrate Track and Monitor location data with your compatible existing systems to develop dashboards (fees may apply).



Assess the feasibility of your site for indoor tracking and digitize then import your floorplans (fees apply).

Global and Australian Awards for Telstra Track and Monitor



Winner
AccomsAwards 2019






Winner
IoT Global Awards 2019



Shortlisted
IoT Alliance Awards
2019



Asset trackers for your needs

				
	Cat-M1 Solar Tracking Unit	Cat-M1 Tracking Unit	Cat-M1 Rechargeable Tracking Tag	Bluetooth® Tracking Unit
Network Technology	Cat-M1 (LTE-M)	Cat-M1 (LTE-M) and Bluetooth Community		Bluetooth Community
Dimensions	262 mm x 88 mm x 30mm	114 mm X 80 mm X 39mm	35 mm X 75 mm X 19mm	45mm x 38mm x 21mm
Tracking Frequency	Configurable based on time or movement. Please see detailed tracking profiles in the in the device specifications below.			Proximity to Telstra Bluetooth Finding Community and/or enabled indoor tracking network ¹
Battery	Rechargeable (Solar)	Replaceable	Rechargeable	Non Replaceable
Battery Life	Up to 8 months per full charge (based on 1 track every 4 hours – est. life ~5years)	Up to 6 years	Up to 4 weeks per full charge (based on movement)	Up to 4 years
Hardware Cost (ex GST) (and Min cost)	Hardware repayment options available \$499 (per device) (Min cost \$499)	\$199 (per device) (Min cost \$199)	\$179 (per device) (Min cost \$179)	\$49 (Min order 20) (Min cost \$980)
Monthly Service Fee per device (ex GST)	\$14.50 p/mth	\$10 p/mth	\$10 p/mth	\$1.50 p/mth
Minimum Total Cost (Device price plus minimum order plus service fee)	\$499 + \$14.50 (min 1 device)	\$199 + \$10 (min 1 device)	\$179 + \$10 (min 1 device)	\$980 + \$30 (min 20 devices)

¹Currently supported on Bluetooth enabled Cisco Meraki access points. Additional fees apply to digitise and import your floor plans. We can confirm this fee on request.



Cat-M1 Solar Tracking Unit

Track high-value, non-powered assets

Built to withstand the elements, the ruggedised Cat-M1 Solar Tracking Unit can be attached to containers, trailers, heavy equipment and other large, movable assets. It has a rechargeable solar battery that can last up to 8 months between charges, with a device life up to 5 years. The Unit can also be enabled with Bluetooth Scanning to assist you locate your low value assets being tracked via Bluetooth Units.

Set up couldn't be easier

There's no need to invest in infrastructure or software – and you won't be burdened with new, complex processes. Unboxing and initial activation takes approximately 5 minutes – once your account is setup, simply attach the unit and begin tracking via our online portal.

~3m sq km's for Cat-M1 Devices (Australia)

The Cat-M1 Solar Tracking Unit uses the Cat-M1 (LTE-M) technology on Telstra's IoT network which reaches around 3m square kilometres, so you can track your assets on a low power wide area network.

Budgeting is a breeze

The Cat-M1 Solar Tracking Unit can be purchased upfront or via monthly repayments over 12, 24 or 36 months so you can forecast costs with confidence. And we have volume pricing options.



Cat-M1 Solar Tracking Unit.

Ruggedised, compact and built to perform

Specifications

Dimensions	262mm x 88mm x 30mm
Tracking Frequency	Up to 1 per minute when moving Up to 1 per 4 hours when stationary Bulk upload of data every 10 min (moving)
Bluetooth Scanning Frequency	Up to 10 seconds every 60 seconds Bulk upload of data every 20 min
Location	GPS (multi-constellation)
Battery	Solar rechargeable (9000mAh)
Battery Life	8 months without charging at 1 report every 4 hours (est. life ~5yrs under normal operating temperature)
Operating Temperature	Normal operating temperature: -10°C to +60°C Maximum operating temperature: -20°C to +70°C
Certifications	IP67 FCC, IC, CE, PTCRB, RCM RoHS, Reach, SAEJ1455, ISO16750
Hardware Cost and Service fee	\$499 per device + \$14.50 monthly service fee
Min Total Cost	\$499+\$14.50 monthly service fee

Things you need to know

Battery life depends on device usage and configuration, and surrounding conditions. API does not include integration with your systems. Data charges may apply to view assets in the Track and Monitor portal. For use within Telstra's Cat-M1 (LTE-M) coverage areas on Telstra's IoT network. Check coverage at <https://www.telstra.com.au/business-enterprise/solutions/internet-of-things/iot-coverage>

Telstra Track and Monitor®

Cat-M1 Tracking Unit & Cat-M1 Rechargeable Tracking Tag

Track assets cost effectively using Cat-M1 and also Bluetooth

Choose a tracker to suit your needs.

Cat-M1 Tracking Unit

Rugged and long-life battery for a set and forget use case. Highly configurable profiles let you select the tracking that suits you.



Cat-M1 Rechargeable Tracking Tag

A small rechargeable tag for high frequency tracking where regular charging is viable.



	Cat-M1 Tracking Unit	Cat-M1 Rechargeable Tracking Tag
Dimensions	114mm X 80 mm X 39mm	35mm X 75mm X 19mm
Tracking Frequencies	Configurable based on time or movement. 1, 2, 4 times per day, movement or high g force based + Proximity to Bluetooth Finding Community and/or your enabled indoor tracking network ¹	Configurable based on time or movement + Proximity to Bluetooth Finding Community and/or your enabled indoor tracking network ¹
Location	GPS (multi-constellation) Wi-Fi (geolocation) Telstra Bluetooth Finding Community Your enabled indoor tracking network ¹	GPS (multi-constellation) Wi-Fi (geolocation) Telstra Bluetooth Finding Community Your enabled indoor tracking network ¹
Battery	Replaceable (12000mAh)	Rechargeable (1000mAh)
Battery Life	Up to 6 years (on 1 track per day profile) For maximum battery life, mount the unit / tag away from hot or sunny conditions.	Rechargeable - Up to 4 weeks per full charge (based on movement)
Operating Temperature	-20 °C to 60 °C	0 °C to 50 °C
Certifications	IP67/IK10 RCM, CE, BT SIG	IP67 RCM, CE, BT, SIG
Hardware Cost (and Min cost)	\$199 (per device) (Min cost \$199)	\$179 (per device) (Min cost \$179)
Monthly Service Fee per device (ex GST)	\$10 p/mth	\$10 p/mth
Minimum Total Cost (Device price plus minimum order plus service fee)	\$209 (min 1 device)	\$189 (min 1 device)

¹Currently supported on Bluetooth enabled Cisco Meraki access points. Additional fees apply to digitise and import your floor plans. We can confirm this fee on request.

Things you need to know

Battery life depends on device usage and configuration, and surrounding conditions. API does not include integration with your systems. Data charges may apply to view assets in the Track and Monitor portal. For use within Telstra's Cat-M1 (LTE-M) coverage areas on Telstra's IoT network.

Check coverage at <https://www.telstra.com.au/business-enterprise/solutions/internet-of-things/iot-coverage>

Telstra Track and Monitor®

Bluetooth Tracking Unit

Track non-critical assets cost effectively



Bluetooth Units are useful for smaller / lower value assets which need semi-frequent tracking.

The Bluetooth Finding Community

Enable your workforce to take your Bluetooth network with them, using their mobile devices to locate nearby items. You can also receive observations from the broader community of users as well as 6000+ Telstra Air enabled payphones and public hotspots. Discover the reach of the Telstra Bluetooth community at www.telstra.com/BluetoothCommunity

Track in your indoor spaces

Enhance the visibility of assets at your premises by enabling location telemetry via the Bluetooth radio on your Cisco Meraki access points

Easy setup

Simply turn on your tracking unit / tag, record your asset details against the tracking unit / tag via the Track and Monitor Web (UI) application or mobile app, then attach the device to your asset.

Bluetooth® Tracking Unit

Minimum Order Quantity = 20



Dimensions	Small 45mm X 38mm X 21mm
Tracking Frequencies	Your unit / tag broadcasts its unique identifier at intervals, and its last known approximate location is tracked when in proximity to the Telstra Bluetooth Finding Community and/or your enabled indoor tracking network ¹
Location	Telstra Bluetooth Finding Community Your enabled indoor tracking network ¹
Battery	Type: Non-Replaceable
Battery Life	Up to 4 Years
Operating Temperature	-20°C to 60 °C For maximum battery life, mount the unit away from hot or sunny conditions
Certification	IP68, IK08 RCM, CE, BT SIG
Minimum spend	\$980 Hardware (Upfront, based on \$49 per device x minimum quantity 20)
Monthly Service Fee per device (ex GST)	Service - \$1.50 p/mth

¹Currently supported on Bluetooth enabled Cisco Meraki access points. Additional fees apply to digitise and import your floor plans. We can confirm this fee on request.

Things you need to know

 Telstra.com/Track and Monitor
Click 'Get In Touch'

Battery life depends on device usage and configuration, and surrounding conditions. The Bluetooth® mark and logo are registered trademarks owned by Bluetooth SIG Inc, and any use of such marks by Telstra Corporation Limited is under license. The existence, size and extent of the Telstra Bluetooth Community will vary from location to location, will not be the same at all times and will not be present in all locations.