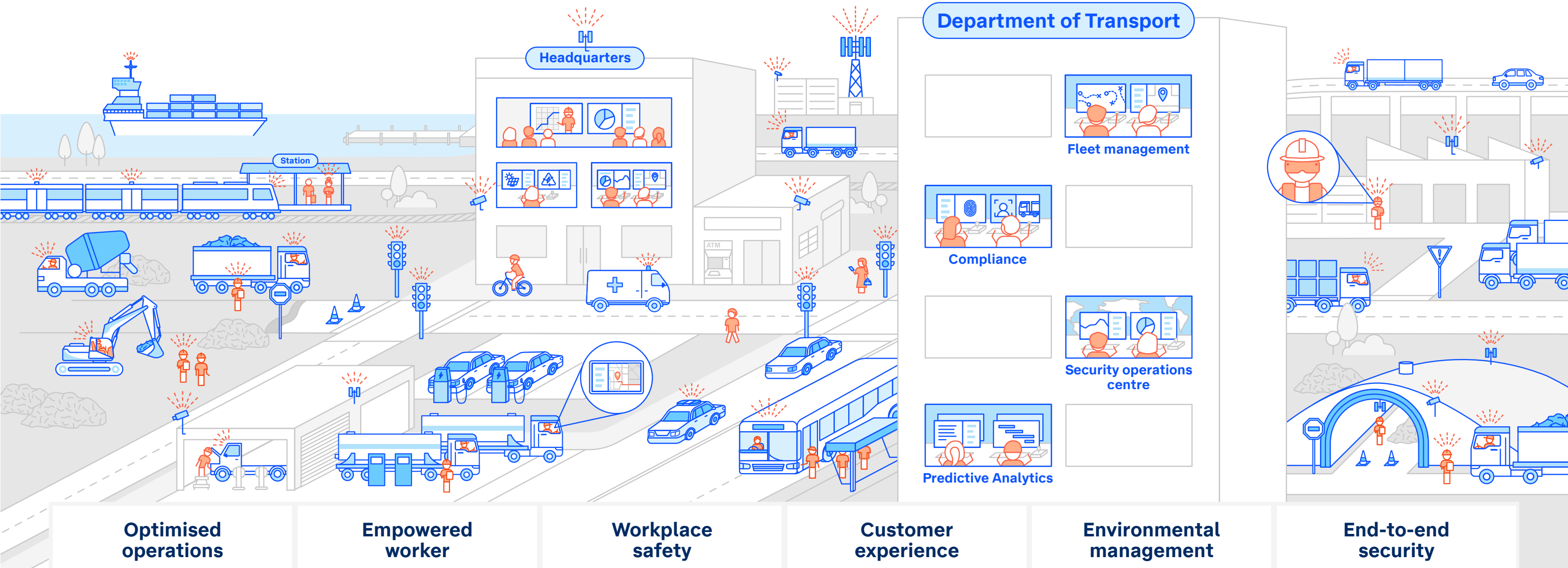
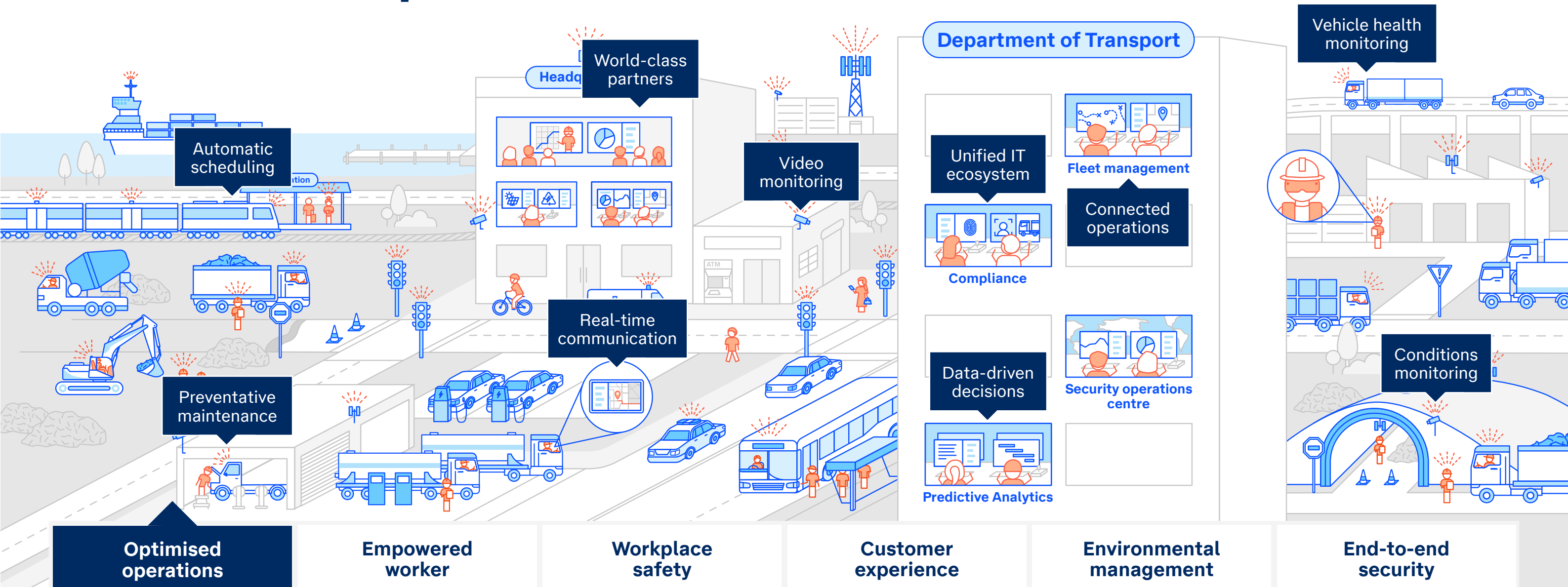


# Smart Transport

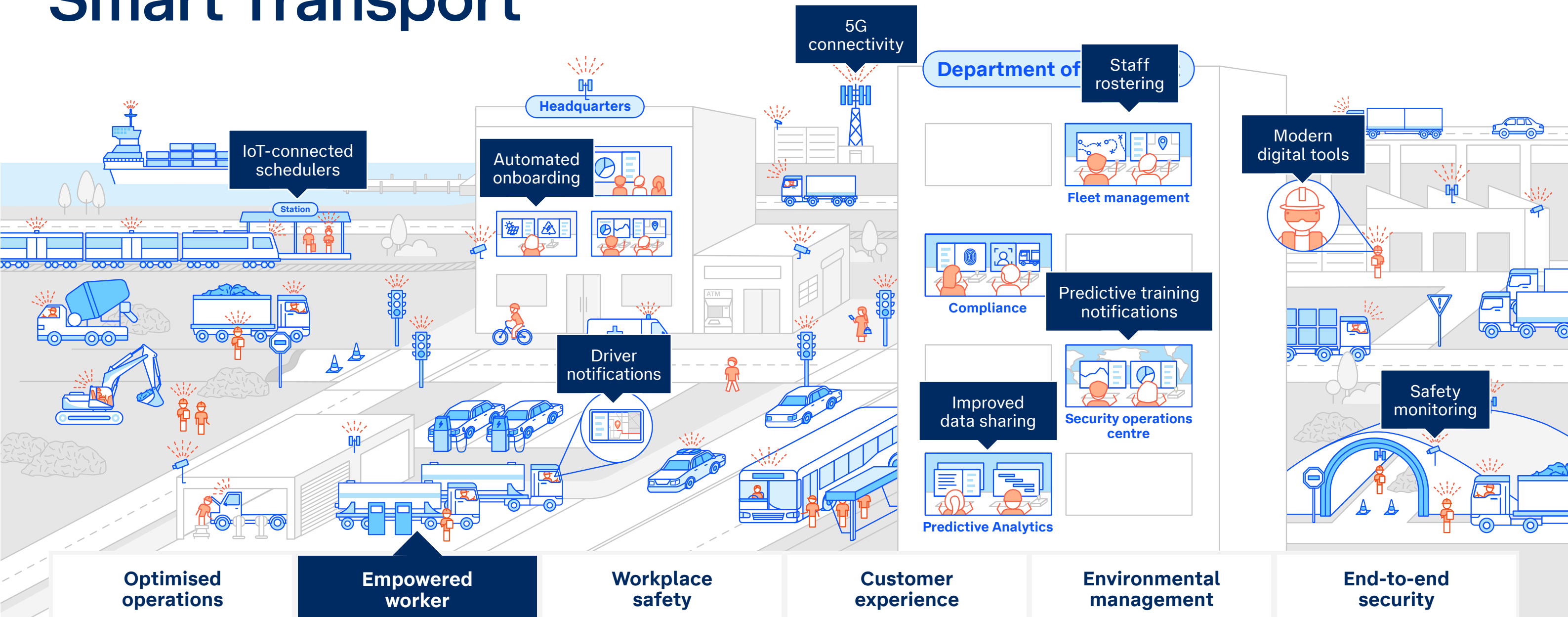


# Smart Transport



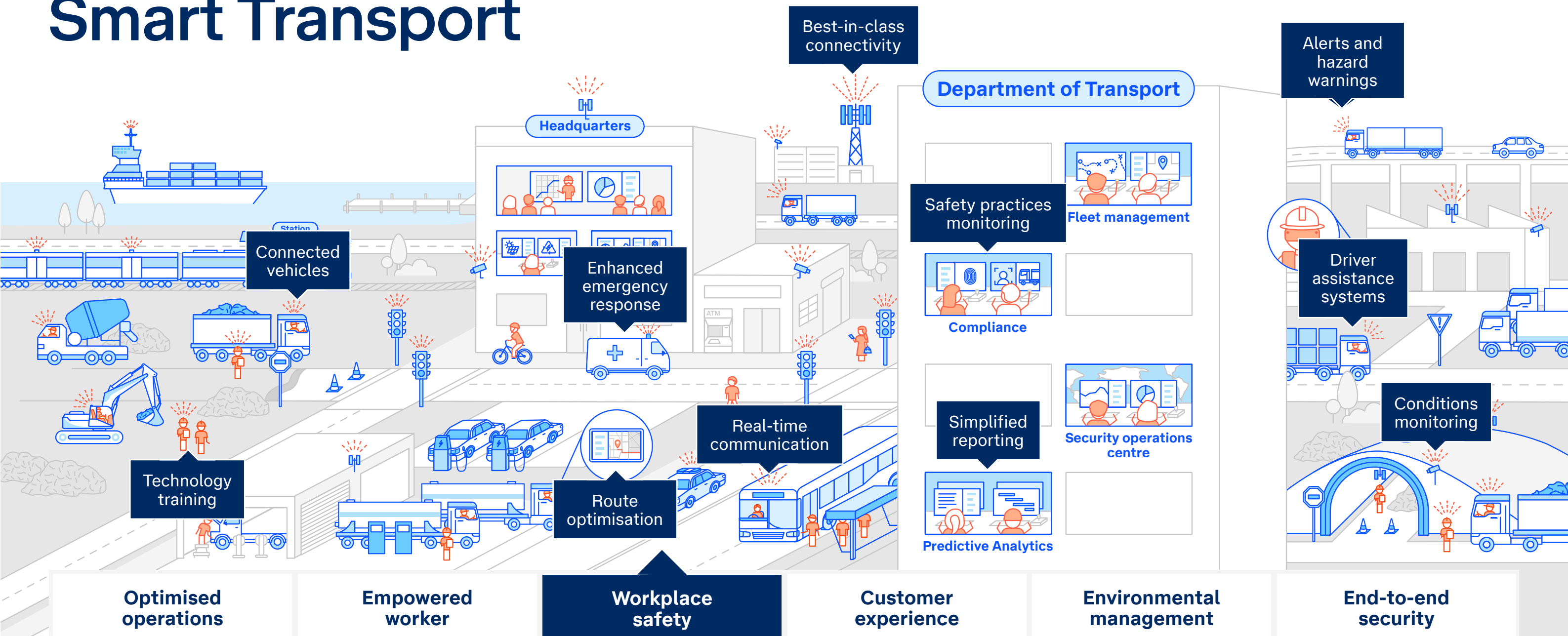
Achieve operation excellence with our flexible and resilient networks. Leverage AI and insights to make clearer, data-driven decisions, adapt to market conditions and drive growth. Use vehicle health monitoring and usage to plan preventative maintenance remotely. Connect vehicles, traffic lights, signage, bus stops and more to reduce congestion and optimise routes, scheduling and costs.

# Smart Transport



Modernise and innovate your transport operations to support your staff and deliver better outcomes for them. This can include improved safety monitoring, staff rostering and access to modern digital tools. IoT-connected scheduling and driver notifications help optimise staff efficiency and safety.

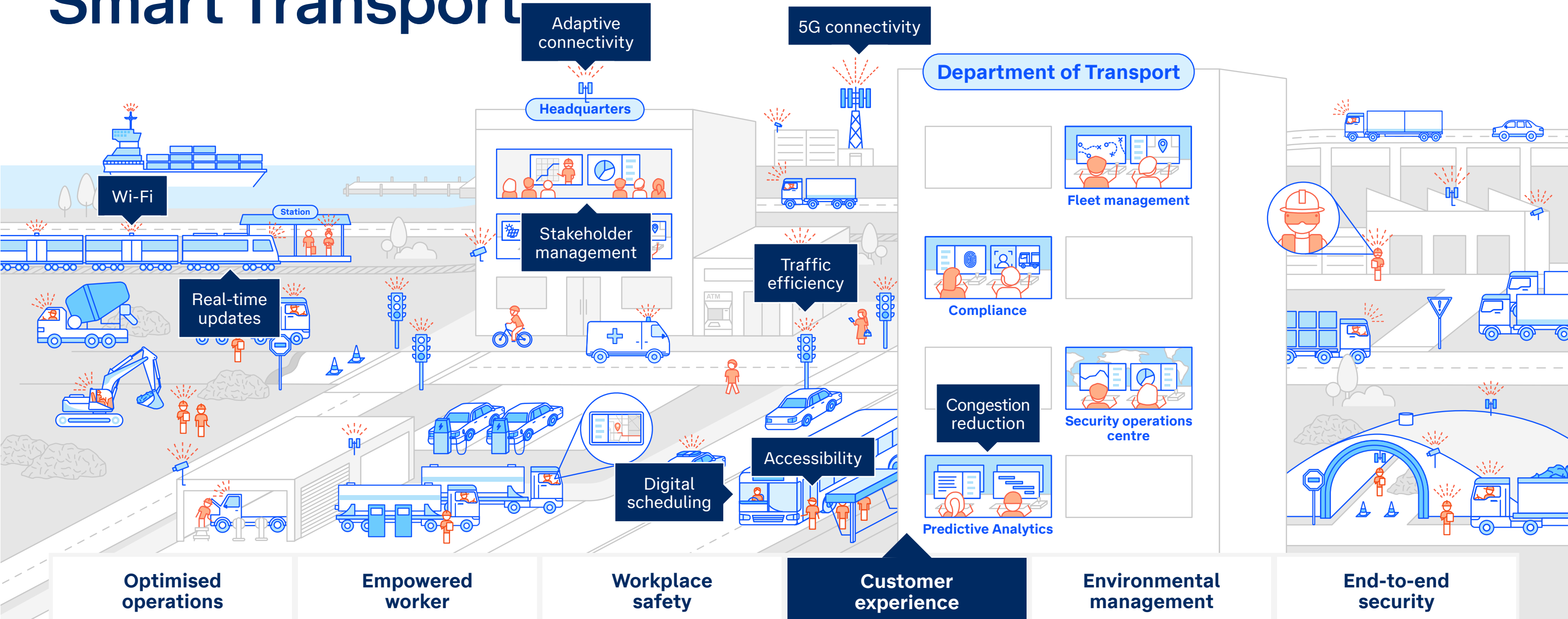
# Smart Transport



Enable real-time communication between vehicles and infrastructure through V2X data that enables vehicles to communicate with each other and roadside infrastructure. Enable your infrastructure to provide real-time warnings about accidents or dangerous conditions. Advanced driver assistance systems also help keep all road users safer. With our technologies, you'll be able to better monitor and protect against risks and reach your safety targets.

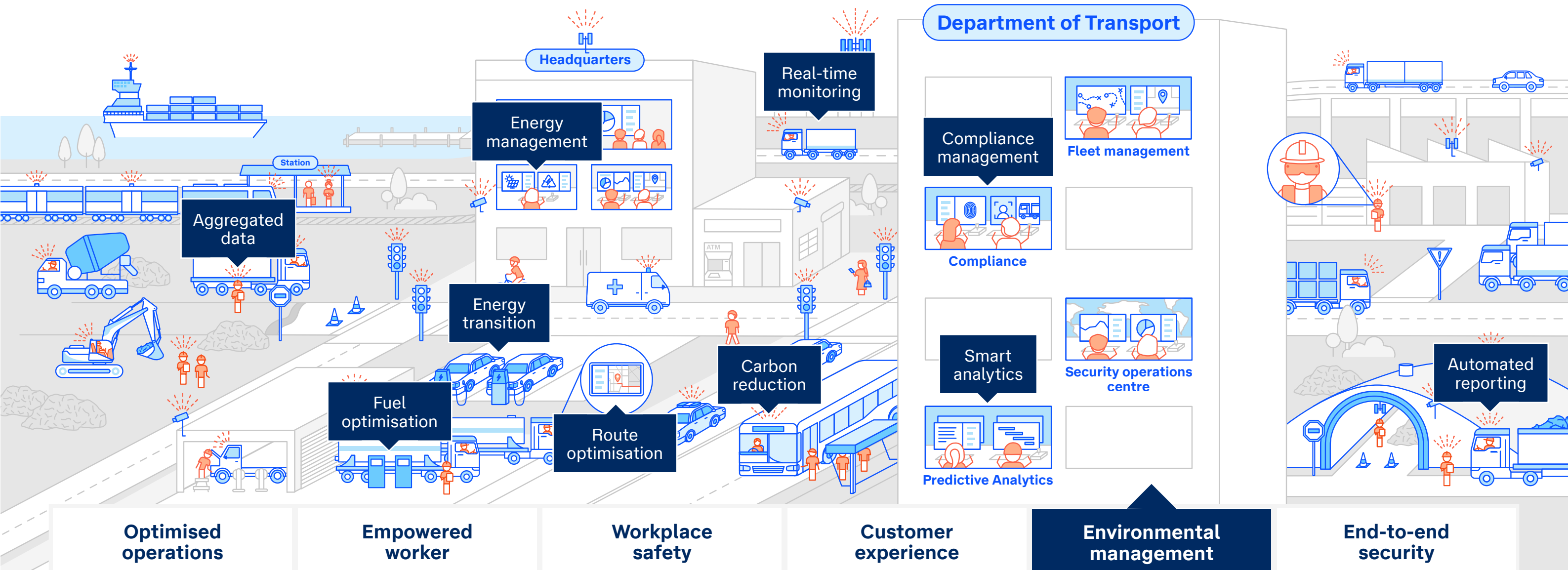


# Smart Transport



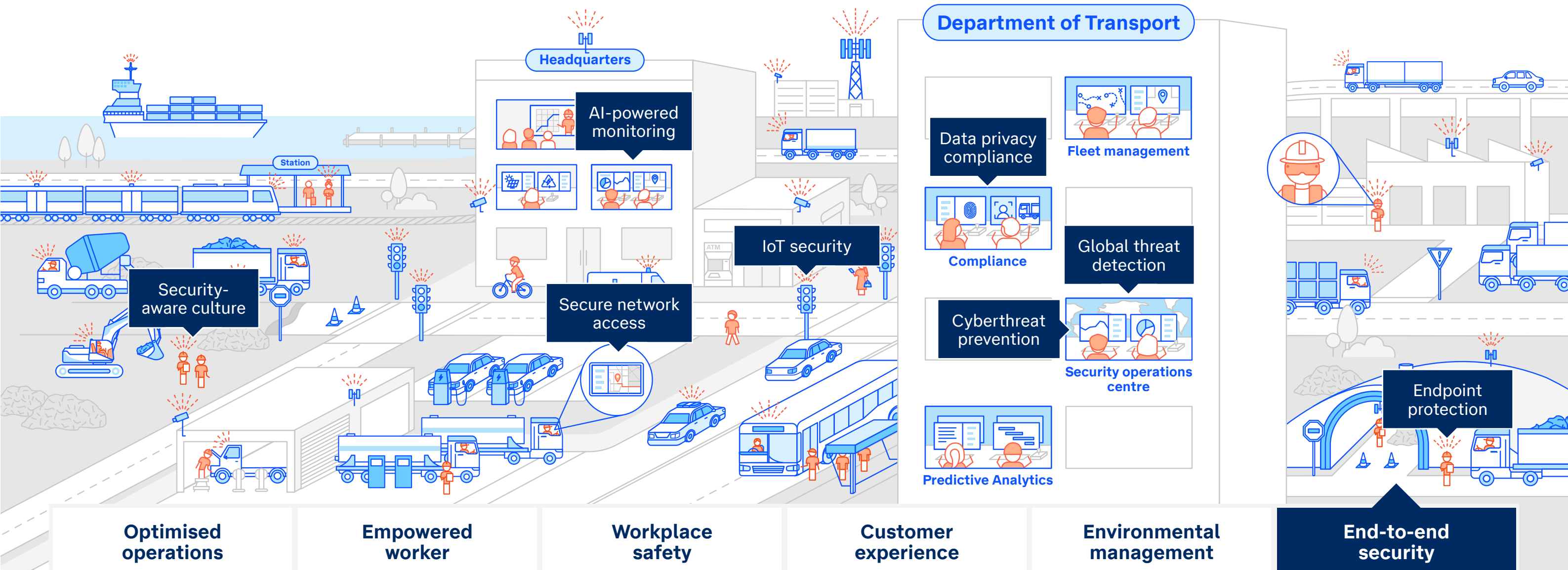
Use cutting-edge technologies to create efficient and accessible transport for all Australians. Improve connectivity on public transport through Wi-Fi access, – enabling digital scheduling and real-time alerts on arrivals, departures and delays. Automate and optimise traffic flow and reduce congestion using connected vehicles and signals that share data on traffic location and speed.

# Smart Transport



Simplify environmental compliance and reporting by connecting technologies and aggregating data from multiple sources (sensors, wearables, vehicles, etc.) and tagging it. Monitoring vehicle routes and fuel usage in real time facilitates energy management, route and fuel optimisation, carbon reduction and compliance.

# Smart Transport



Help protect your operations with cutting-edge threat detection and AI-powered monitoring that proactively works to defend against cyberthreats. Rely on Telstra's robust and advanced security measures to keep infrastructure, and customer and company data secure. Through our adaptive ecosystem, you can bring your network, cloud and security together.