



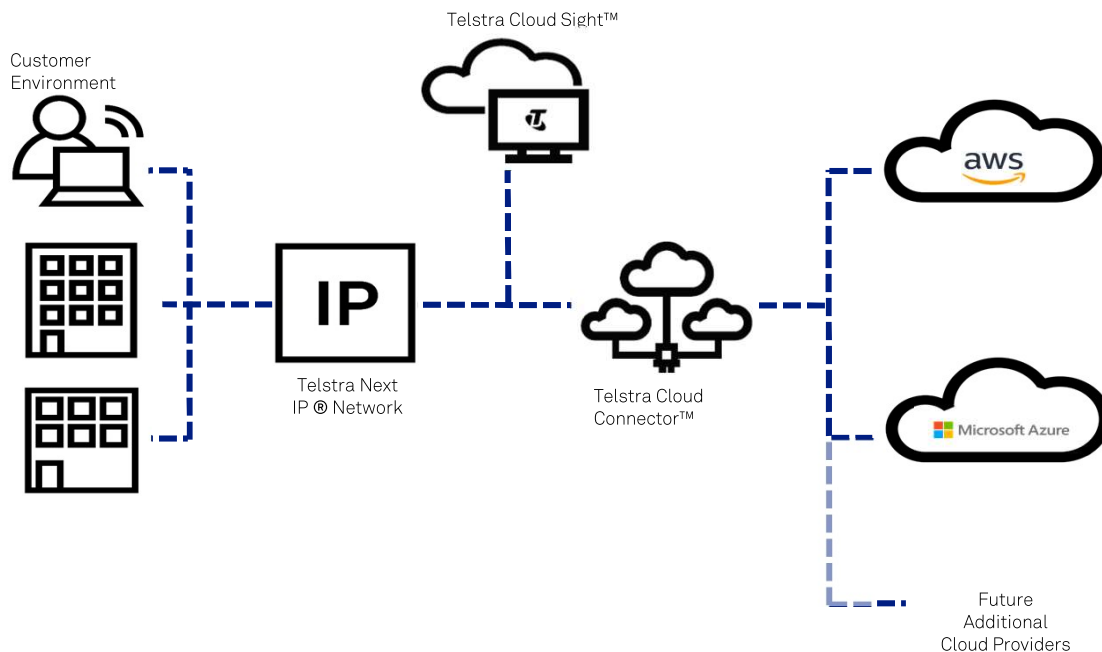
# Telstra Cloud Connector™

## Flexible cloud bandwidth you can share with your clouds

The rise of cloud technology and its increased usage means organisations require reliable and secure network connections to cloud services to run their business.

Telstra Cloud Connector provides an automated high-performance and reliable network connection from your Telstra private network to your cloud services. By using private connectivity, you can reduce the security and performance issues common with public internet access. Telstra Cloud Connector is available and managed through the Telstra Cloud Sight platform.

With Telstra Cloud Connector you have a fully automated solution to connect to multiple cloud services and select the bandwidth your business needs. You can run your critical business operations and take advantage of the flexibility and cost-efficiency of our resilient networks.



### Features

- Wizard style, end-to-end provisioning, from your WAN to the cloud providers network
- One console to manage multiple cloud connections
- Self-service near real-time bandwidth upgrade, scalable as per the business requirements
- Aggregate your bandwidth across multiple cloud providers
- Highly secured and advanced network with minimal chances of a threat
- Visibility of network performance including its allocated capacity, peak/average bandwidth



### Benefits

- Single service provider for networking and cloud requirements
- Effortless provisioning and management of cloud networking and cloud services
- Reduced complexity and provisioning time
- Allocate resources and bandwidth based on business priorities
- 1,12,24,36 months contract options

## Available shared bandwidth tiers

	aws	Microsoft Azure
<b>Cloud Connector available bandwidth tiers (to be used across multiple cloud providers)</b>	10M, 50M, 100M, 200M, 300M, 400M, 500M, 700M, 1G, 2G, and 3G	
<b>DC locations (AU only)</b>	Sydney (Equinix SY3), Global Switch Sydney	AU East (Syd Equinix SY3), AU South East (Mel Next DC)
<b>Corresponding product at cloud provider</b>	AWS direct connect*	Azure express route*
<b>Supported bandwidth tiers per connection</b>	50M, 100M, 200M, 300M, 400M, 500M	50M, 100M, 200M, 500M, 1G

## Why Choose Telstra?



### Single Management portal

Telstra Cloud Sight® enables you to buy, deploy and manage all of your Telstra purchased single or multi-cloud environments from within a single portal. Sign in once using Single Sign On (SSO) and utilise the set up wizard to automate your cloud connectivity deployments.



### Security you can rely on

The Telstra Next IP network has achieved International security standard ISO-27001 certification and our Ethernet network is Metro Ethernet Forum (MEF) certified and using Telstra Cloud Connector can bridge the connection between Telstra Next IP and your public cloud service. All network activity is monitored 24/7 by some of the most advanced operations centres in Australia.



### Telstra Purple

As the largest Australian owned technology services business, our national network of over 1,500 certified network, security, cloud, collaboration, mobility, software, analytics, and design experts combine with our leading enterprise technology services to help you deliver outcome-based, transformative tech solutions.



### Telstra Cloud Concierge

Our Telstra Cloud Concierge service provides you with access to a team of cloud experts who can help get you set up, give you an overview of the Telstra Cloud Sight portal and help remove the stress of choosing the best cloud for your needs.

### Things You Need To Know:

Telstra Cloud Connector is a Layer 3 solution, limited to Telstra Australia. The Cloud Connector can be used with Telstra's carriage products (Next IP and IP VPN service initially). The Cloud Connector can only be used with clouds purchased through Telstra (public cloud locations based in Sydney and Melbourne). The Cloud Connector comes with high-availability and geo-redundancy inbuilt.

\* Additional charges apply for aws direct connect. Cloud Concierge is a free service for the first 30 days.

For more information:

 scan QR code

 [telstra.com/cloudsight](https://telstra.com/cloudsight)

