

Turn asset tracking data in to decisions

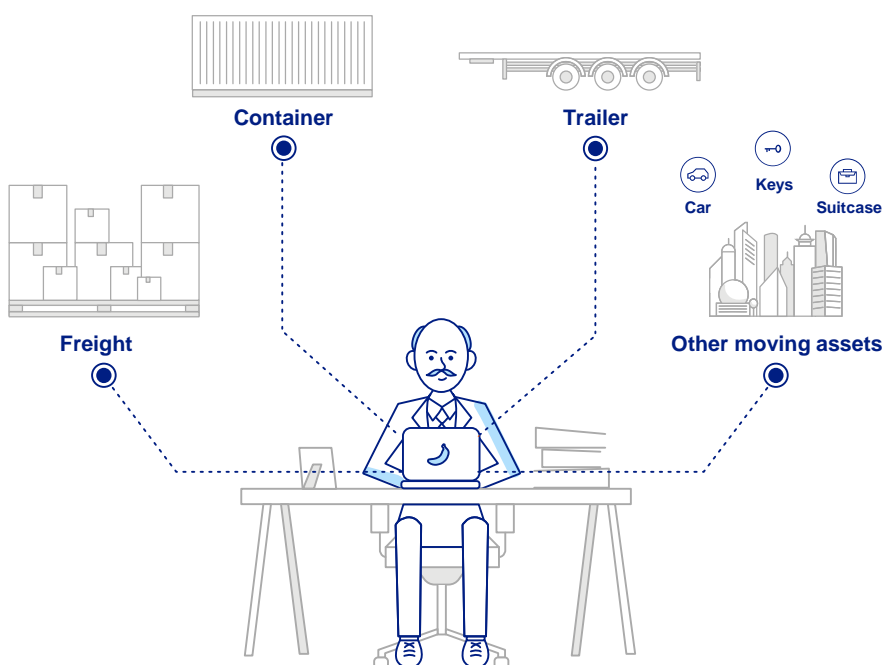
Telstra Track and Monitor® can help your business track moving assets, reduce costs, and improve the customer experience

Today, your customers demand a better service faster, and cheaper. To meet these demands, you need to be more efficient managing your moving assets.

The more visibility you have, the better you can manage your business and turn data in to decisions.

We'll deliver the right asset tracking solution for your business.

| |
|--|
| Device |
| Track assets of different sizes and values with enterprise grade devices designed to suit your needs. |
| Network Technologies |
| Track assets using Cat-M1 (LTE-M) or Bluetooth® |
| Track and Monitor App Web Portal and API |
| A secure onshore cloud platform hosts tracking data displayed in a web portal or mobile app. Integrate with your own systems via API (fees may apply). |



Asset trackers for your needs

Visibility at a glance, detail at a click.

- visibility of moving assets' last known approximate location details when in range of network technologies.
- Asset location data is sent via cost efficient network technologies.
- create tags and geozones to quickly search for specific or multiple assets by asset type, job or location.

Make decisions based on data in the moment

- make decisions based on the last known approximate location of the asset at the click of a button.
- location data means that you can manage assets at scale and serve your customers better.

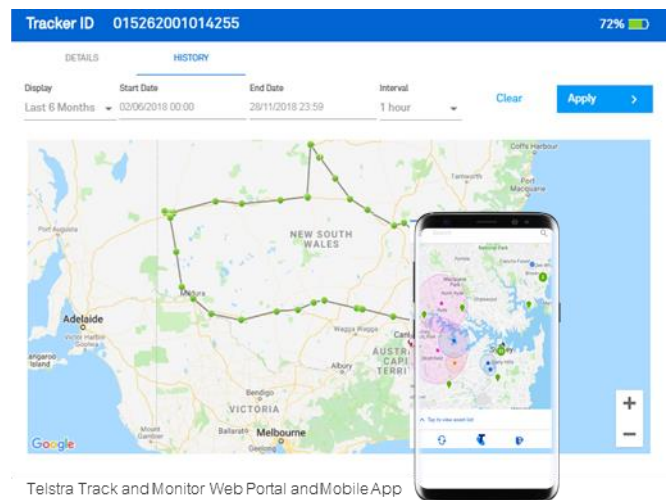
Telstra IoT network technologies

Telstra provides network technologies to reliably and securely support a range of IoT deployments:

- **Cat-M1 (LTE-M)**
The Telstra IoT Network has around 3m sq km's of coverage for Cat-M1 devices. It's Australia's largest low power wide area (LPWA) footprint that supports IoT securely at scale and at low cost.
- **Telstra Bluetooth community**
Bluetooth finding is supported in part by a crowd sourced community of users whose devices, if enabled, help locate items.
 - as well as over 3500 Telstra Air enabled payphones and Telstra Air Public Wi-Fi Hotspots providing location updates when a unit or tag is within range of the payphone and other hotspots.
 - plus your own app users and enabled devices.

Testimonial – SCT Logistics deployment of 1500 Solar Trackers

“SCT Logistics chose Telstra Track and Monitor for the unparalleled IOT network coverage across Australia to deploy Solar charged Cat-M1 trackers on our fleet. It will allow us to locate rail wagons and containers easily, forecast delivery times and analyse data in the moment to deliver efficiencies in our business.” Sean Atchinson- CIO, SCT Logistics



Telstra Track and Monitor Web Portal and Mobile App

A professional services partner you can trust

Our professional services teams and partners can help you get started quickly with a solution that is ready to scale.

Innovate with confidence knowing we:



have the expertise to take you through a design-led collaborative approach for your IoT solution.



are invested in the future of IoT and in helping you in solving the right problem, with the right solution.



offer a pilot program* to help you integrate Track and Monitor location data with your existing systems to develop dashboards (*fees may apply.)



implement solutions which can assist you to reduce costs, deliver a better customer experience and business insights.

Global and Australian Awards for Telstra Track and Monitor



Winner
Accoms Awards 2019








Winner
IoT Global Awards 2019



Shortlisted
IoT Alliance Awards 2019



Asset trackers for your needs

| |  |  |  |  |  |
|--|---|---|--|---|---|
| | Cat-M1 Solar Tracking Unit | Cat-M1 Tracking Unit | Cat-M1 Rechargeable Tracking Tag | Bluetooth® Tracking Unit | Bluetooth® Tracking Tag |
| Network Technology | Cat-M1 (LTE-M) | Cat-M1 (LTE-M) and Bluetooth Community | | Bluetooth Community | Bluetooth Community |
| Dimensions | 262 mm x 88 mm x 30mm | 114 X 80 X 39mm | 35 X 75 X 19mm | 45mm x 38mm x 21mm | 39mm x 5.5mm |
| Tracking Frequency | 1 per minute – moving 1 per 4 hrs - stationary | 1 per day (Cat-M1) +Proximity to Bluetooth Finding Community | 1 per 20min - moving 1 per 12 hrs-stationary +Proximity to Bluetooth Finding Community | Proximity to Telstra Bluetooth Finding Community | |
| Battery | Rechargeable (Solar) | Replaceable | Rechargeable | Non Replaceable | Replaceable-CR2032 |
| Battery Life | Up to 8 months per full charge (based on 1 track every 4 hours – est. life ~5years) | Up to 5 years | Up to 4 weeks per full charge (based on movement) | Up to 5 years | Up to 12 months |
| Hardware Cost (ex GST) (and Min cost) | Hardware repayment options available \$499 (per device) (Min cost \$499) | \$199 (per device) (Min cost \$199) | \$179 (per device) (Min cost \$179) | \$49 (Min order 20) (Min cost \$980) | \$29 (per device) (Min cost \$29) |
| Monthly Service Fee per device (ex GST) | \$14.50 p/mth | \$10 p/mth | \$10 p/mth | \$1.50 p/mth | \$1.50 p/mth |
| Minimum Total Cost (Device price plus minimum order plus service fee) | \$499 +14.50 (min 1 device) | \$199 + \$10 (min 1 device) | \$179 + \$10 (min 1 device) | \$980 +30 (min 20 devices) | \$29 + \$1.50 (min 1 device) |



Telstra Track and Monitor® Cat-M1 Solar Tracking Unit

Track high-value, non-powered assets

Built to withstand the elements, the ruggedised Cat-M1 Solar Tracking Unit can be attached to containers, trailers, heavy equipment and other large, movable assets. It has a rechargeable solar battery that can last up to 8 months between charges, with a device life up to 5 years. The Unit can also be enabled with Bluetooth Scanning to assist you locate your low value assets being tracked via Bluetooth Units or Tags.

Set up couldn't be easier

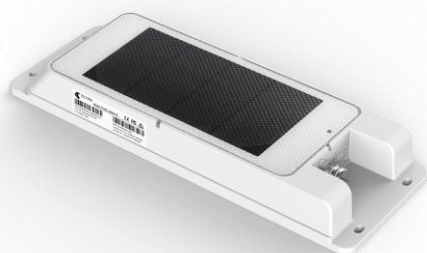
There's no need to invest in infrastructure or software – and you won't be burdened with new, complex processes. Unboxing and initial activation takes approximately 5 minutes – once your account is setup, simply attach the unit and begin tracking via our online portal.

~3m sq km's for Cat-M1 Devices (Australia)

The Cat-M1 Solar Tracking Unit uses the Cat-M1 (LTE-M) technology on Telstra's IoT network which reaches around 3m square kilometres, so you can track your assets on a low power wide area network.

Budgeting is a breeze

The Cat-M1 Solar Tracking Unit can be purchased upfront or via monthly repayments over 12, 24 or 36 months so you can forecast costs with confidence. And we have volume pricing options.



Cat-M1 Solar Tracking Unit.
Ruggedised, compact and built to perform

Specifications

| | |
|--------------------------------------|--|
| Dimensions | 262mm x 88mm x 30mm |
| Tracking Frequency | Up to 1 per minute when moving Up to 1 per 4 hours when stationary Bulk upload of data every 10 min (moving) |
| Bluetooth Scanning Frequency | 20 seconds every 60 seconds Bulk upload of data every 10 min |
| Location | GPS (multi-constellation) |
| Battery | Solar rechargeable (9000mAh) |
| Battery Life | 8 months without charging at 1 report every 4 hours (est. life ~5yrs) |
| Operating Temperature | -20°C to +70°C |
| Certifications | IP67 FCC, IC, CE, PTCRB, RCM RoHS, Reach, SAEJ1455, ISO16750 |
| Hardware Cost and Service fee | \$499 per device + \$14.50 monthly service fee |
| Min Total Cost | \$499+\$14.50 monthly service fee |

Things you need to know

Battery life depends on device usage and configuration, and surrounding conditions. API does not include integration with your systems. Data charges may apply to view assets in the Track and Monitor portal. For use within Telstra's Cat-M1 (LTE-M) coverage areas on Telstra's IoT network. Check coverage at <https://www.telstra.com.au/business-enterprise/solutions/internet-of-things/iot-coverage>



Telstra Track and Monitor®

Bluetooth Tracking Unit & Tag

Track non-critical assets cost effectively

Bluetooth trackers are useful for smaller / lower value assets which need semi-frequent tracking.



The Bluetooth Finding Community

Bluetooth tracking is supported in part by a crowd sourced community of users whose devices help locate items, as well as over 3500 Telstra Air enabled payphones and Telstra Air Public Wi-Fi Hotspots providing location updates when a tag is within tracking range of the payphone and other hotspots.



Easy setup

Simply turn on your tracking unit / tag, record your asset details against the tracking unit / tag via the Track and Monitor Web (UI) application or mobile app, then attach the device to your asset.

| | Bluetooth® Tracking Unit | Bluetooth® Tracking Tag |
|--|---|---|
| | Minimum Order Quantity = 20 | |
| |  |  |
| Dimensions | Small 45 X 38 X 21mm | Extra Small 39 mm X 5.5mm |
| Tracking Frequencies | Your unit / tag broadcasts its unique identifier at intervals, and its last known approximate location is tracked when in proximity to the Telstra Bluetooth Finding Community. | |
| Location | Telstra Bluetooth Finding Community | |
| Battery | Type: Non-Replaceable | Type: Replaceable (CR2032) |
| Battery Life | Up to 5 Years | Up to 12 months |
| Operating Temperature | For maximum battery life, mount the unit/tag away from hot or sunny conditions | |
| Certification | IP68, IK08 RCM, CE, BT SIG | IP40 RCM, CE, BT SIG |
| Minimum spend | \$980 Hardware (Upfront, based on \$49 per device x minimum quantity 20) | \$29 Hardware (Upfront, per device, No minimum quantity) |
| Monthly Service Fee per device (ex GST) | Service - \$1.50 p/mth | Service - \$1.50 p/mth |

Things you need to know

Battery life depends on device usage and configuration, and surrounding conditions. The Bluetooth® mark and logo are registered trademarks owned by Bluetooth SIG Inc, and any use of such marks by Telstra Corporation Limited is under license. The existence, size and extent of the Telstra Bluetooth Community will vary from location to location, will not be the same at all times and will not be present in all locations.

Telstra Track and Monitor®

Cat-M1 Tracking Unit & Cat-M1 Rechargeable Tracking Tag

Track assets cost effectively using Cat-M1 and also Bluetooth

Choose a tracker to suit your needs.

Cat-M1 Tracking Unit

There's a Cat-M1 Unit that also uses proximity to Bluetooth Finding Community. It has a replaceable battery and tracks once per day.



Cat-M1 Rechargeable Tracking Tag

There's a Cat-M1 Unit that also uses proximity to Bluetooth Finding Community. It has a rechargeable battery that can last up to 2 weeks per full charge based on movement.



| | Cat-M1 Tracking Unit | Cat-M1 Rechargeable Tracking Tag |
|--|--|--|
| Dimensions | Cat-M1 (LTE-M) and Bluetooth Community | |
| Tracking Frequencies | 1 per day (Cat-M1) +Proximity to Bluetooth Finding Community <i>*coming soon - new tracking profiles – 2 per-day and 4 per-day</i> | 1 per 20min - moving 1 per 12 hrs- stationary + Proximity to Bluetooth Finding Community |
| Location | GPS (multi-constellation) Wi-Fi (geolocation) Telstra Bluetooth Finding Community | GPS (multi-constellation) Wi-Fi (geolocation) Telstra Bluetooth Finding Community |
| Battery | Replaceable (12000mAh) | Rechargeable (1000mAh) |
| Battery Life | Up to 5 years (on 1 track per day profile) | Rechargeable - Up to 4 weeks per full charge (based on movement) |
| Operating Temperature | For maximum battery life, mount the unit / tag away from hot or sunny conditions. | |
| Certifications | IP67/IK10 RCM, CE, BT SIG | IP67 RCM, CE, BT, SIG |
| Hardware Cost (and Min cost) | \$199 (per device) (Min cost \$199) | \$179 (per device) (Min cost \$179) |
| Monthly Service Fee per device (ex GST) | \$10 p/mth | \$10 p/mth |
| Minimum Total Cost (Device price plus minimum order plus service fee) | \$209 (min 1 device) | \$189 (min 1 device) |

Things you need to know

Battery life depends on device usage and configuration, and surrounding conditions. API does not include integration with your systems. Data charges may apply to view assets in the Track and Monitor portal. For use within Telstra's Cat-M1 (LTE-M) coverage areas on Telstra's IoT network.

Check coverage at <https://www.telstra.com.au/business-enterprise/solutions/internet-of-things/iot-coverage>